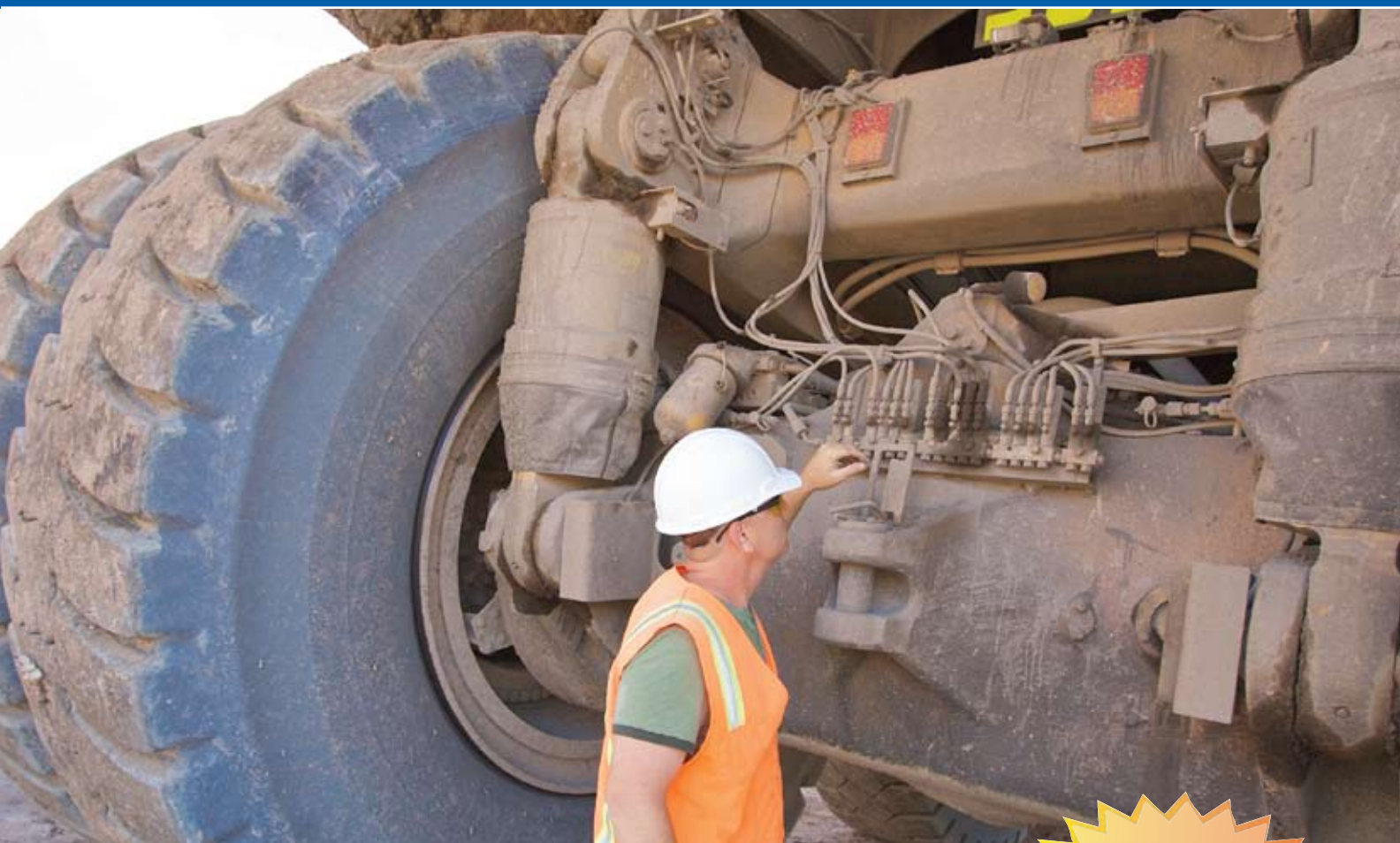




# GL-1 Injector

Automatic Lubrication System



**Graco's captured seal design is the best in the business!**

- Test results show the difference—GL-1 injectors showed no seal leakage at 215,000 cycles
- Seals last 5 times longer than the competition's!
- Combine with GL-11s and GL-32s in the same Single Line Parallel System for a full range of outputs

**Outperforms  
the Competition**





# Precision-honed Components for Reliable Operation in the Harshest Environments

## System Setup Tips

- Run branches off main line and “Tee Out” to banks of injectors instead of in-series
- Locate injectors as close to bearings as possible to minimize line length to bearing to enable max pressure to reach injectors
- Place pressure switch beyond last injector
- Use large diameter tubing (1/4 in.) to lessen restrictions
- Make sure you have enough pressure to achieve normal 2,500 psi (172 bar)
- Make sure you vent down to the minimum reset pressure of your smallest injector

To adjust:

1. Loosen the lock nut
2. Rotate 5/8 inch output adjustment nut clockwise to decrease grease output—decrease the travel of the piston
3. Rotate 5/8 inch output adjustment nut counter-clockwise to increase grease output—increase the travel piston



## Technical Specifications

|                              |  |
|------------------------------|--|
| Maximum operating pressure   | 3500 psi (241 bar)                                     |
| Minimum operating pressure   | 1850 psi (128 bar)                                     |
| Suggested operating pressure | 2500 psi (172 bar)                                     |
| Reset pressure               | 600 psi (4.1 bar)                                      |
| Output volume per cycle      | 0.008–0.08 in <sup>3</sup> (0.13–1.13 c <sup>3</sup> ) |
| Recommended fluids           | Uses NLGI #2 grease down to 32° F (0° C)               |
| Instruction manual           | 308953   |
| Design Guide                 | 309  |
| Zerk Fitting Outlet          | 1/8 in npt   |
| Supply Line Outlet           | 1/4 in npt   |
| Inlet                        | 3/8 in npt   |

*Adjustment Screw*

*Visual Indicator Pins*

*Lock Nut*

*Supply Line Outlet*

*Zerk Fitting with Cap*

*Mounting Holes*

Same as the competition for an easy retrofit



## Ordering Information

|        |                                   |
|--------|-----------------------------------|
| 114901 | One GL-1 Injector and Manifold    |
| 114902 | Two GL-1 Injectors and Manifold   |
| 114903 | Three GL-1 Injectors and Manifold |
| 114904 | Four GL-1 Injectors and Manifold  |
| 114905 | Five GL-1 Injectors and Manifold  |
| 114909 | Replacement GL-1 Injector         |

### GL-1 Series Accessories

|        |                                       |
|--------|---------------------------------------|
| 115120 | GL-1 Injector Outlet Adapter Kit      |
| 115119 | GL-1 Clear Plastisol Injector Cover   |
| 114916 | GL-1 & GL-11 Zerk Fitting and Cap Kit |

## Contact us today!

To receive product information or talk with a Graco representative, call 800-533-9655 or visit us online at [www.graco.com](http://www.graco.com).