

Ordering information



Single Series

Single Point Lubricators

Battery-powered design. UL listed suitable for Class I, Div. 2 groups A,B,C,D, Class II, Div. 2 groups F,G, and Class III hazardous locations.

24E028	EM-DRIVE, 60 cc, Lithium EP-2
24E029	EM-DRIVE, 60 cc, Construction
24E030	EM-DRIVE, 60 cc, Bearing
24E031	EM-DRIVE, 60 cc, Milling
24E032	EM-DRIVE, 60 cc, Food
24E033	EM-DRIVE, 60 cc, Synthetic
24E034	EM-DRIVE, 60 cc, Ultra
24E035	EM-DRIVE, 60 cc, Lithium EP-1
24E036	EM-DRIVE, 120 cc, Lithium EP-2
24E037	EM-DRIVE, 120 cc, Construction
24E038	EM-DRIVE, 120 cc, Bearing
24E039	EM-DRIVE, 120 cc, Milling
24E040	EM-DRIVE, 120 cc, Food
24E041	EM-DRIVE, 120 cc, Synthetic
24E042	EM-DRIVE, 120 cc, Ultra
24E043	EM-DRIVE, 120 cc, Lithium EP-1
24E044	EM-DRIVE, 250 cc, Lithium EP-2
24E045	EM-DRIVE, 250 cc, Construction
24E046	EM-DRIVE, 250 cc, Bearing
24E047	EM-DRIVE, 250 cc, Milling
24E048	EM-DRIVE, 250 cc, Food
24E049	EM-DRIVE, 250 cc, Synthetic
24E050	EM-DRIVE, 250 cc, Ultra
24E051	EM-DRIVE, 250 cc, Lithium EP-1



Externally powered—turns on and off with the on/off cycle of the machine

24E054	EM-XP, 60 cc, Lithium EP-2
24E055	EM-XP, 60 cc, Construction
24E056	EM-XP, 60 cc, Bearing
24E057	EM-XP, 60 cc, Milling
24E058	EM-XP, 60 cc, Food
24E059	EM-XP, 60 cc, Synthetic
24E060	EM-XP, 60 cc, Ultra
24E061	EM-XP, 60 cc, Lithium EP-1
24E062	EM-XP, 120 cc, Lithium EP-2
24E063	EM-XP, 120 cc, Construction
24E064	EM-XP, 120 cc, Bearing
24E065	EM-XP, 120 cc, Milling
24E066	EM-XP, 120 cc, Food
24E067	EM-XP, 120 cc, Synthetic
24E068	EM-XP, 120 cc, Ultra
24E069	EM-XP, 120 cc, Lithium EP-1
24E070	EM-XP, 250 cc, Lithium EP-2
24E071	EM-XP, 250 cc, Construction
24E072	EM-XP, 250 cc, Bearing
24E073	EM-XP, 250 cc, Milling
24E074	EM-XP, 250 cc, Food
24E075	EM-XP, 250 cc, Synthetic
24E076	EM-XP, 250 cc, Ultra
24E077	EM-XP, 250 cc, Lithium EP-1



Externally powered and controlled. Interfaces directly with your machine's controller.

24E080	EM-XC, 60 cc, Lithium EP-2
24E081	EM-XC, 60 cc, Construction
24E082	EM-XC, 60 cc, Bearing
24E083	EM-XC, 60 cc, Milling
24E084	EM-XC, 60 cc, Food
24E085	EM-XC, 60 cc, Synthetic
24E086	EM-XC, 60 cc, Ultra
24E087	EM-XC, 60 cc, Lithium EP-1
24E088	EM-XC, 120 cc, Lithium EP-2
24E089	EM-XC, 120 cc, Construction
24E090	EM-XC, 120 cc, Bearing
24E091	EM-XC, 120 cc, Milling
24E092	EM-XC, 120 cc, Food
24E093	EM-XC, 120 cc, Synthetic
24E094	EM-XC, 120 cc, Ultra
24E095	EM-XC, 120 cc, Lithium EP-1
24E096	EM-XC, 250 cc, Lithium EP-2
24E097	EM-XC, 250 cc, Construction
24E098	EM-XC, 250 cc, Bearing
24E099	EM-XC, 250 cc, Milling
24E100	EM-XC, 250 cc, Food
24E101	EM-XC, 250 cc, Synthetic
24E102	EM-XC, 250 cc, Ultra
24E103	EM-XC, 250 cc, Lithium EP-1
24E582	Refill, 60 cc, Lithium EP-2
24E583	Refill, 60 cc, Construction
24E584	Refill, 60 cc, Bearing
24E585	Refill, 60 cc, Milling
24E586	Refill, 60 cc, Food
24E587	Refill, 60 cc, Synthetic
24E588	Refill, 60 cc, Ultra
24E589	Refill, 60 cc, Lithium EP-1
24E590	Refill, 120 cc, Lithium EP-2
24E591	Refill, 120 cc, Construction
24E592	Refill, 120 cc, Bearing
24E593	Refill, 120 cc, Milling
24E594	Refill, 120 cc, Food
24E595	Refill, 120 cc, Synthetic
24E596	Refill, 120 cc, Ultra
24E597	Refill, 120 cc, Lithium EP-1
24E598	Refill, 250 cc, Lithium EP-2
24E599	Refill, 250 cc, Construction
24E600	Refill, 250 cc, Bearing
24E601	Refill, 250 cc, Milling
24E602	Refill, 250 cc, Food
24E603	Refill, 250 cc, Synthetic
24E604	Refill, 250 cc, Ultra
24E605	Refill, 250 cc, Lithium EP-1



ABOUT GRACO

Founded in 1926, Graco is a world leader in fluid handling systems and components. Graco products move, measure, control, dispense and apply a wide range of fluids and viscous materials used in vehicle lubrication, commercial and industrial settings.

The company's success is based on its unwavering commitment to technical excellence, world-class manufacturing and unparalleled customer service. Working closely with qualified distributors, Graco offers systems, products and technology that set the quality standard in a wide range of fluid handling solutions. Graco provides equipment for spray finishing, protective coating, paint circulation, lubrication, and dispensing sealants and adhesives, along with power application equipment for the contractor industry. Graco's ongoing investment in fluid management and control will continue to provide innovative solutions to a diverse global market.

GRACO LOCATIONS

CONTACT

MAILING ADDRESS
P.O. Box 1441
Minneapolis, MN 55440-1441
Tel: 612.623.6000
Fax: 612.623.6777

AMERICAS

MINNESOTA
Worldwide Headquarters
Graco Inc.
88-11th Avenue N.E.
Minneapolis, MN 55413

EUROPE

BELGIUM
European Headquarters
Graco N.V.
Industrieterrein-Oude Bunders
Slakweidestraat 31
3630 Maasmechelen,
Belgium
Tel: 32.89.770.700
Fax: 32.89.770.777

ASIA PACIFIC

JAPAN
Graco K.K.
1-27-12 Hayabuchi
Tsuzuki-ku
Yokohama City, Japan 2240025
Tel: 81.45.593.7300
Fax: 81.45.593.7301

ASIA PACIFIC

CHINA
Graco Hong Kong Ltd.
Representative Office
Room 118 1st Floor
No.2 Xin Yuan Building
No.509 Cao Bao Road
Shanghai, P.R. China 200233
Tel: 86.21.649.50088
Fax: 86.21.649.50077

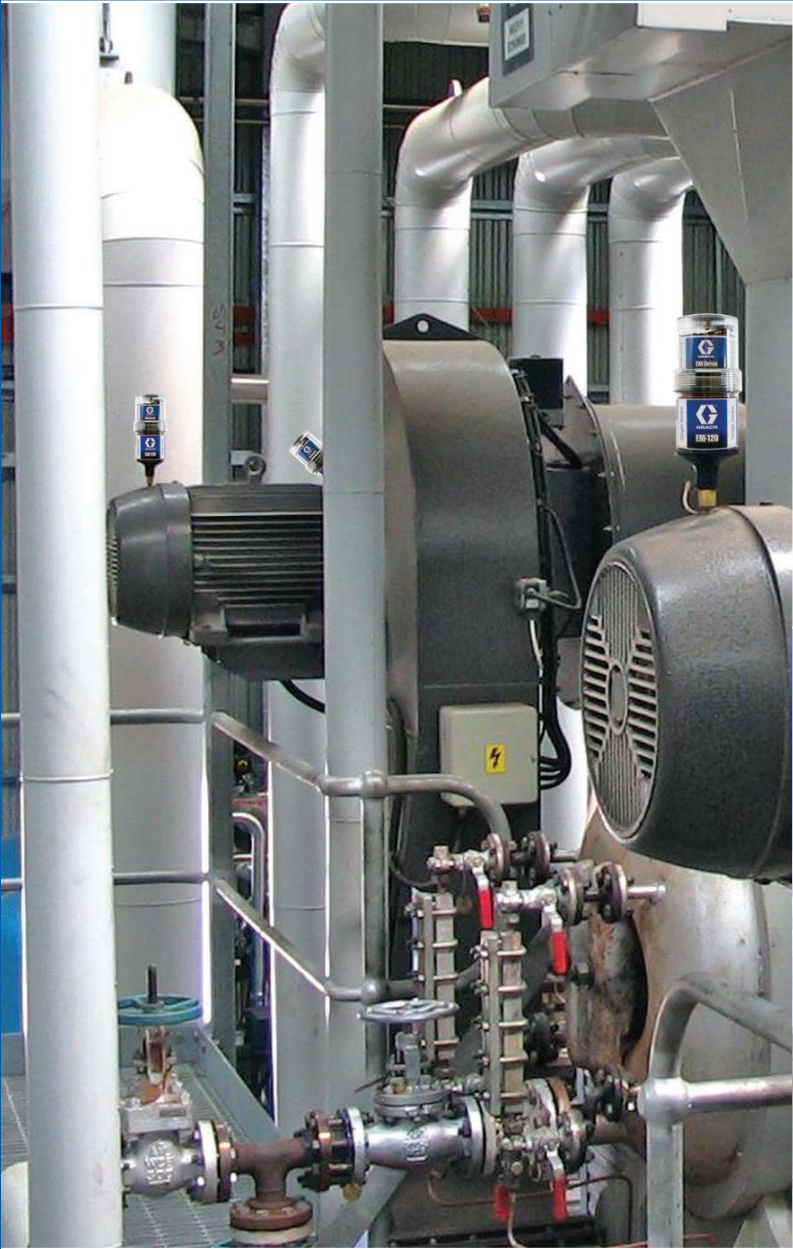
ASIA PACIFIC

KOREA
Graco Korea Inc.
Choheung Bank Building
4th Floor #1599
Gwanyang-Dong, Dongan-Ku,
Anyang-Si, Gyunggi-Do,
Korea 431-060
Tel: 82(Korea).31.476.9400
Fax: 82(Korea).31.476.9801

All written and visual data contained in this document are based on the latest product information available at the time of publication. Graco reserves the right to make changes at any time without notice.

Graco is certified ISO 9001.

Europe
+32 89 770 700
FAX +32 89 770 777
WWW.GRACO.BE




Automatic Lubrication Made Simple

Easy to use with minimal preceeding investment

Graco's Electrochemical (gas) and Electromechanical (motor-driven) Single Series lubricators deliver small, predetermined amounts of lubricant at frequent intervals for an uninterrupted supply of fresh lubricant directly to your bearing or lubrication point. This prevents over and under lubrication problems associated with manual lubrication (grease gun) methods.



EC—Electrochemical Single Series




EC-120™

A durable and reliable general purpose lubricator that installs easily, in almost any position. Suitable for use in potentially explosive atmospheres in Europe.

ATEX Approvals: CE Ex I M2 c X, CE Ex II 2G c IIC 80°C X, CE Ex II 2D c 80°C X.

Technical Specifications

Housing Design Metal
Drive Type Electrochemical (gas)
Discharge Time 1, 3, 6, or 12 months
Lubricant Volume 120 cc
Operating Temp 0 to 40 °C / 32 to 104 °F
Max Pressure 4 bar / 58 psi




EC-100™

Transparent plastic gives you at-a-glance indication of the lubricant level. Ideal for hygienically clean and food safe locations. Also great for high corrosion locations. Suitable for use in potentially explosive atmospheres in Europe.

ATEX Approvals: CE Ex I M2 c X, CE Ex II 2G c IIC 80°C X, CE Ex II 2D c 80°C X.

Technical Specifications

Housing DesignTransparent Plastic
Drive Type Electrochemical (gas)
Discharge Time 1, 3, 6, or 12 months
Lubricant Volume 100 cc
Operating Temp 0 to 40 °C / 32 to 104 °F
Max Pressure 4 bar / 58 psi



CT-120™

This fully automatic lubricator is built on the same durable and reliable platform as the EC-120, with the added benefit of operating in sub-freezing environments.

Technical Specifications

Housing Design Metal
Drive Type Electrochemical (gas)
Discharge Time 1 or 3 months
Lubricant Volume 120 cc
Operating Temp -25 to 10 °C / -13 to 50 °F
Max Pressure 4 bar / 58 psi

Grease Types Available


Lubricant	Application and Environment	Lubricant	Application and Environment
Multi-use lithium EP-2™ grease	<ul style="list-style-type: none">• Agriculture, bushings/ball joints, truck and auto wheel bearings, heavy duty industrial• High wear, moderate loads, moderate speeds, moderate temperatures	Ball bearing and pillow-block grease	<ul style="list-style-type: none">• Lightly loaded pillow blocks, idler pulleys, oven conveyors, electric motors, fans, pumps• Wet and corrosive conditions, quiet environments, light loads, moderate to high speeds, moderate temperatures
Construction and off-highway grease	<ul style="list-style-type: none">• Agriculture/mining, cement plants, construction/off road, rock quarry, earth moving equipment, fleet equipment, heavy industry, pivot pins/spline shafts• Extreme heat, heavy loads, high sliding wear, slow speeds, dirty environments, shock loading	Mill grease	<ul style="list-style-type: none">• Aluminum mills, paper mills, steel mills, offshore rigs, power generation• Corrosive media, extreme heat, heavy loads, wet conditions, slow to moderate speeds

Advantages with Graco Single Series

- Extend Equipment Life
- Reduce Operating Costs
- Increase Productivity
- Less Waste
- Safer Work Environment



EM—Electromechanical Single Series




EM-Drive™

Battery-powered, motor-drive delivers precise lubrication, regardless of temperature and vibration. Easy-to-read LED feedback indicators ensure trouble-free operation. Suitable for Class I, Div 2 groups A,B,C,D, Class II, Div 2 groups F,G, and Class III hazardous locations. UL Listed.

Technical Specifications

Housing DesignPlastic with transparent reservoir
Drive TypeElectromechanical (motor-driven)
Discharge Time 1, 3, 6, or 12 months
Lubricant Volume 60, 120, or 250 cc
Operating Temp -10 to 50 °C / 14 to 122 °F
Max Pressure 5 bar / 75 psi




EM-XP™

Delivers precise lubrication, regardless of temperature and vibration. External power turns on and off with the cycle of the machine it's lubricating—ideally suited for inconsistently used equipment.

Technical Specifications

Housing DesignPlastic with transparent reservoir
Drive TypeElectromechanical (motor-driven)
Discharge Time 1, 3, 6 or 12 months
Lubricant Volume 60, 120, or 250 cc
Operating Temp -10 to 50 °C / 14 to 122 °F
Max Pressure 5 bar / 75 psi



EM-XC™

Delivers precise lubrication, regardless of temperature and vibration. Precisely match lubrication output with your machine's operating conditions—works with your PLC to lubricate only when you need it.

Technical Specifications

Housing DesignPlastic with transparent reservoir
Drive TypeElectromechanical (motor-driven)
Discharge amount 0.26 to 2.11 cc per activation
Lubricant Volume 60, 120, or 250 cc
Operating Temp -10 to 50 °C / 14 to 122 °F
Max Pressure 5 bar / 75 psi

Lubricant	Application and Environment	Lubricant	Application and Environment
Food grade H1™ grease	<ul style="list-style-type: none">• Food and beverage industries, pharmaceuticals• Incidental food contact, hot and cold temperatures, moderate to high speeds, medium loads	Ultra-high speed spindle grease	<ul style="list-style-type: none">• Machine tools associated with: grinding, drilling, turning, milling, lathes• Ultra-high speeds, extreme low temperatures
Synthetic industrial grease	<ul style="list-style-type: none">• Wind energy main bearing, pulp and paper machines, general heavy industry, marine applications, centralized grease systems• Extreme low and high temperatures, severe loads, corrosive media, slow to moderate speeds	Multi-use lithium EP-1™ grease	<ul style="list-style-type: none">• General industrial applications, pins and bushings, track rollers, water pumps, plain and anti-friction bearings• Moderate speeds, light to moderate loads, moderate temperatures, moderate water

Ordering information

Metal body construction, general purpose lubricator.		Plastic body, designed for use in hygienically clean environments, high corrosion applications.		Metal body construction, designed for cold temperature applications.	
24D855	EC-120, 1 Mo., Lithium EP-2	24D888	EC-100, 1 Mo., Lithium EP-2	24D960	CT-120 1 Mo., Lithium EP-2
24D856	EC-120, 1 Mo., Construction	24D889	EC-100, 1 Mo., Construction	24D961	CT-120 1 Mo., Construction
24D857	EC-120, 1 Mo., Bearing	24D890	EC-100, 1 Mo., Bearing	24D962	CT-120 1 Mo., Bearing
24D858	EC-120, 1 Mo., Milling	24D891	EC-100, 1 Mo., Milling	24D963	CT-120 1 Mo., Milling
24D859	EC-120, 1 Mo., Food	24D892	EC-100, 1 Mo., Food	24D964	CT-120 1 Mo., Food
24D860	EC-120, 1 Mo., Synthetic	24D893	EC-100, 1 Mo., Synthetic	24D965	CT-120 1 Mo., Synthetic
24D861	EC-120, 1 Mo., Ultra	24D894	EC-100, 1 Mo., Ultra	24D966	CT-120 1 Mo., Ultra
24D862	EC-120, 1 Mo., Lithium EP-1	24D895	EC-100, 1 Mo., Lithium EP-1	24D967	CT-120 1 Mo., Lithium EP-1
24D863	EC-120, 3 Mo., Lithium EP-2	24D896	EC-100, 3 Mo., Lithium EP-2	24D968	CT-120 3 Mo., Lithium EP-2
24D864	EC-120, 3 Mo., Construction	24D897	EC-100, 3 Mo., Construction	24D969	CT-120 3 Mo., Construction
24D865	EC-120, 3 Mo., Bearing	24D898	EC-100, 3 Mo., Bearing	24D970	CT-120 3 Mo., Bearing
24D866	EC-120, 3 Mo., Milling	24D899	EC-100, 3 Mo., Milling	24D971	CT-120 3 Mo., Milling
24D867	EC-120, 3 Mo., Food	24D900	EC-100, 3 Mo., Food	24D972	CT-120 3 Mo., Food
24D868	EC-120, 3 Mo., Synthetic	24D901	EC-100, 3 Mo., Synthetic	24D973	CT-120 3 Mo., Synthetic
24D869	EC-120, 3 Mo., Ultra	24D902	EC-100, 3 Mo., Ultra	24D974	CT-120 3 Mo., Ultra
24D870	EC-120, 3 Mo., Lithium EP-1	24D903	EC-100, 3 Mo., Lithium EP-1	24D975	CT-120 3 Mo., Lithium EP-1
24D871	EC-120, 6 Mo., Lithium EP-2	24D904	EC-100, 6 Mo., Lithium EP-2		
24D872	EC-120, 6 Mo., Construction	24D905	EC-100, 6 Mo., Construction		
24D873	EC-120, 6 Mo., Bearing	24D906	EC-100, 6 Mo., Bearing		
24D874	EC-120, 6 Mo., Milling	24D907	EC-100, 6 Mo., Milling		
24D875	EC-120, 6 Mo., Food	24D908	EC-100, 6 Mo., Food		
24D876	EC-120, 6 Mo., Synthetic	24D909	EC-100, 6 Mo., Synthetic		
24D877	EC-120, 6 Mo., Ultra	24D910	EC-100, 6 Mo., Ultra		
24D878	EC-120, 6 Mo., Lithium EP-1	24D911	EC-100, 6 Mo., Lithium EP-1		
24D879	EC-120, 12 Mo., Lithium EP-2	24D912	EC-100, 12 Mo., Lithium EP-2		
24D880	EC-120, 12 Mo., Construction	24D913	EC-100, 12 Mo., Construction		
24D881	EC-120, 12 Mo., Bearing	24D914	EC-100, 12 Mo., Bearing		
24D882	EC-120, 12 Mo., Milling	24D915	EC-100, 12 Mo., Milling		
24D883	EC-120, 12 Mo., Food	24D916	EC-100, 12 Mo., Food		
24D884	EC-120, 12 Mo., Synthetic	24D917	EC-100, 12 Mo., Synthetic		
24D885	EC-120, 12 Mo., Ultra	24D918	EC-100, 12 Mo., Ultra		
24D886	EC-120, 12 Mo., Lithium EP-1	24D919	EC-100, 12 Mo., Lithium EP-1		

