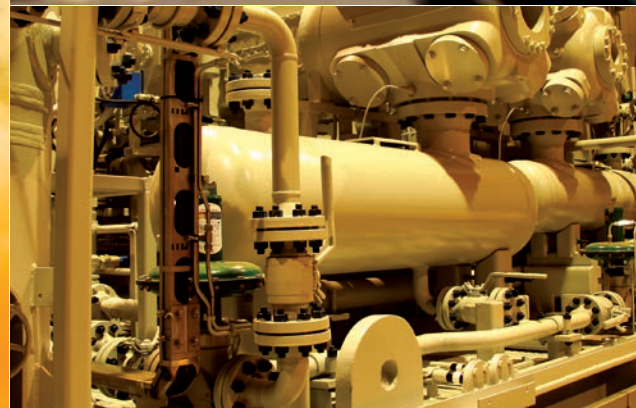


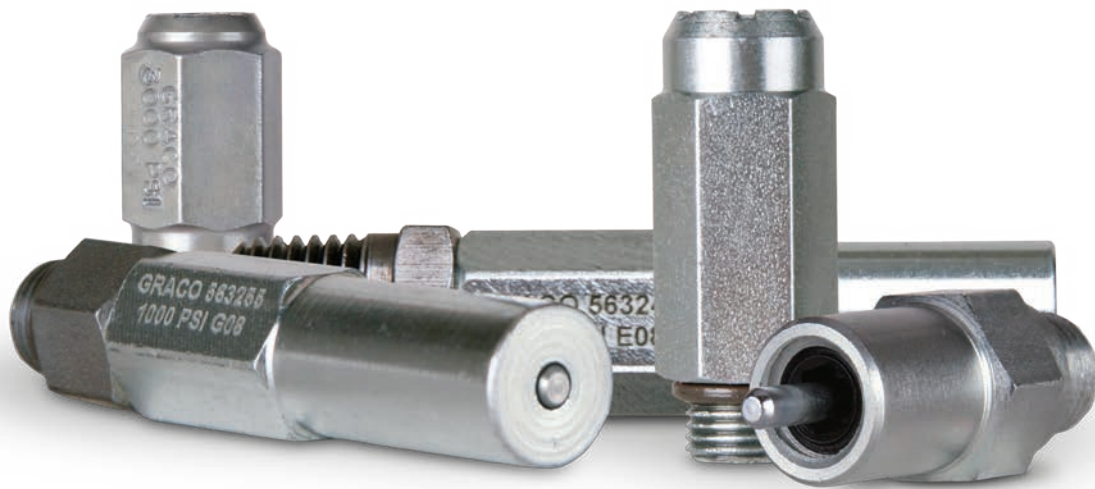


Series Progressive Divider Valves

Durable and Dependable Lubrication Metering Systems



PROVEN QUALITY. LEADING TECHNOLOGY.



Maximize your up-time with Graco

Divider Valve Accessories

Protect Your Equipment

A complete range of products to give you the information you need to ensure your machine is functioning at peak performance with the right amount of lubrication.



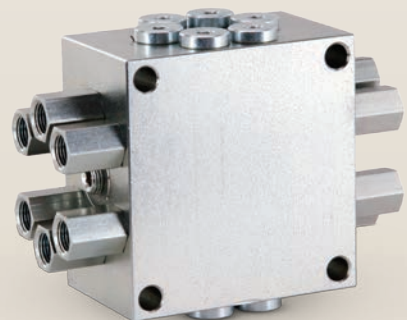


High temperature 176° C (350° F)
and synthetic lubricants
are considered standard with
Graco divider valves.

Less downtime with **Graco** automatic lubrication **solutions**

**Help keep your equipment running
at peak performance**

Graco's series progressive systems give you the most advanced centralized lubrication—providing the best metering and accessory options available to help protect your investment.



Trabon® USP—Uniblock Series Progressive

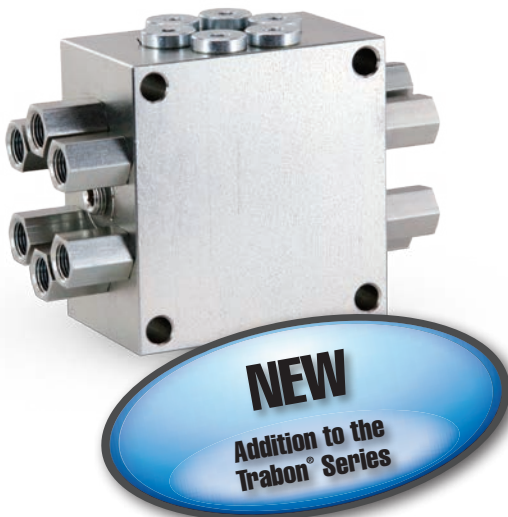
Trabon USP is an economical option to solving your lubrication system needs. It serves as a high quality entry point to move away from manual lubrication, and is smaller than most competitive mono blocks to save valuable machine space.

Features

- Series progressive metering in a one piece block - no assembly required!
- Space efficient design with 6, 8, 10, 12, 14, or 16 outlets. Outlets can be combined to meet larger lubrication needs
- Fittings come with the valve block
- Built-in outlet check valves ensure accurate lube delivery, every time
- Works with standard MSP magnetic and electronic proximity switch cycle indicators to provide real-time assurance of a successful lube event

Typical Application

Mobile, industrial, food & beverage, wind, and many more



Trabon® MD Series

The Trabon MD Series is the most compact series progressive solution making it a perfect fit for tight spaced applications.

Features

- Available with 2, 3, 4, or 6 outlets
- Easy to install on new or existing equipment
- Use our cycle indicator pin models to provide positive assurance of a successful lube event

Typical Application

Industrial or mobile applications where space is at a premium



Trabon® MJ Series

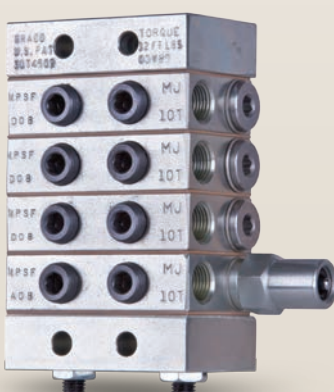
The Trabon MJ series features a compact and easily customizable design that can be tailor fit to meet a variety of specific lube requirements. Capable of handling grease grades up to NLGI #1.

Features

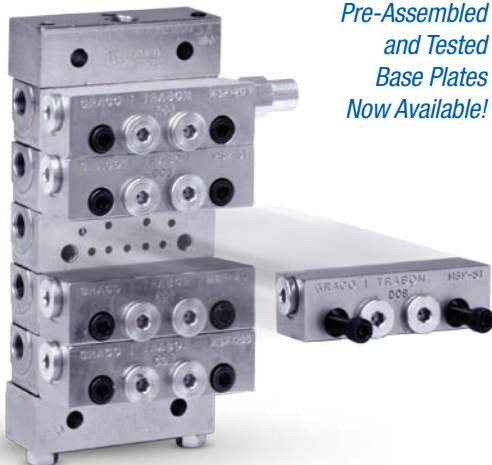
- Space efficient - from 6 to 16 points from one block assembly
- Built-in outlet check valves ensure accurate lube delivery, every time
- Alternate outlet on face of valves can be fitted with optional performance indicators, taking the guesswork out of troubleshooting
- Can be easily accessorized with magnetic and electronic proximity switch cycle indicators to provide positive assurance of a successful lube event

Typical Application

Machine tools, textile, glass & can machinery, mobile equipment



Trabon® MSP Series



*Pre-Assembled
and Tested
Base Plates
Now Available!*

The Trabon MSP Series is designed for quality, reliability, and ease of use. It was the original modular-style series progressive divider valve - and is still the best!

Features

- Quick change valve sections can be removed from the base assembly without disturbing any lube lines – minimizing labour cost and maximizing your machine up-time
- Can be easily accessorized with magnetic and electronic proximity switch cycle indicators to provide real-time assurance of a successful lube event
- Alternate outlet on face of valves can be fitted with optional performance indicators, taking the guesswork out of troubleshooting
- Built-in outlet check valves ensure accurate lube delivery, every time

Typical Application

Mobile, industrial, food & beverage, wind and many more

Manzel® MHH Series

Same capable design as the Trabon MSP Series, with even tighter and more exacting tolerances. The Manzel MHH Series delivers highly accurate lube delivery for demanding high pressure oil applications.

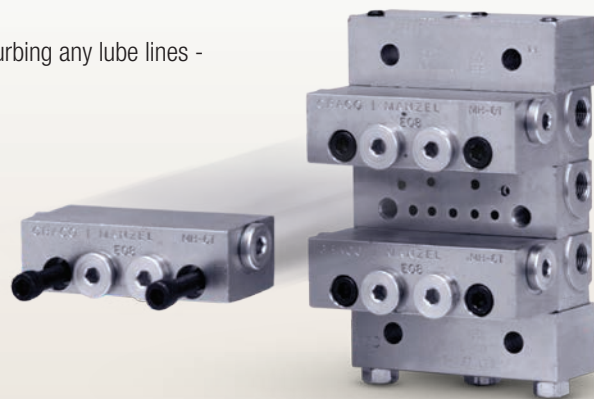
*Pre-Assembled and
Tested Base Plates
Now Available!*

Features

- Quick change valve sections can be removed from the base assembly without disturbing any lube lines - minimizing labour cost and maximizing your machine up-time
- Can be easily accessorized with magnetic and electronic proximity switch cycle indicators to provide positive assurance of a successful lube event
- Alternate outlet on face of valves can be fitted with optional performance indicators, taking the guesswork out of troubleshooting
- Built-in outlet check valves ensure accurate lube delivery, every time

Typical Application

Compressors, industrial equipment, textile and mobile equipment



Trabon® MX Series

Greater output volumes for heavy service requirements make the Trabon MX Series ideal for steel and paper mill systems with it's economical and compact design.

Features

- Durable design withstands harsh environments and operating conditions
- Built-in outlet check valves ensure accurate lube delivery, every time
- Can be easily accessorized with magnetic and electronic proximity switch cycle indicators to provide positive assurance of a successful lube event
- Alternate outlet on face of valves can be fitted with optional performance indicators, taking the guesswork out of troubleshooting

Typical Application

Pulp and paper, steel mills, heavy and high volume industrial applications



Trabon® MXP Series



The Trabon MXP Series' greater output volume makes it easy to customize your assembly to meet larger machine requirements.

Features

- Quick change valve sections can be removed from the base assembly without disturbing any lube lines – minimizing labour cost and maximizing your machine up-time
- Can be easily accessorized with magnetic and electronic proximity switch cycle indicators to provide positive assurance of a successful lube event
- Alternate outlet on face of valves can be fitted with optional performance indicators, taking the guesswork out of troubleshooting
- Built-in outlet check valves ensure accurate lube delivery, every time

Typical Application

Pulp and paper, steel mills, heavy and high volume industrial applications

Trabon® MGO Series

The Trabon MGO Series offers the largest output available in a series progressive system. Ideal for heavy-duty and large bearing applications with wide temperature variations and high volume requirements.

Features

- Can be easily accessorized with magnetic and electronic proximity switch cycle indicators to provide positive assurance of a successful lube event
- Alternate outlet on face of valves can be fitted with optional performance indicators, taking the guesswork out of troubleshooting
- Robust design is virtually indestructible and built to perform in extreme environments

Typical Application

Pulp and paper, steel mills, heavy and high volume industrial applications



Air Oil Series

A Graco exclusive design! The Air Oil solution that detects air line or oil line faults in your system. Series progressive monitoring ensures your critical bearings are lubricated properly.



Features

- Convenient manifold design mounts directly to the face of standard Graco series progressive divider valve assembly
- Check valve design prevents oil from being forced into the air system if lube lines get crushed or bearings get blocked
- Air combines with the oil after the fluid outlet check, preventing air from backing up into your oil system
- Complete kits include manifold, air sensor, and check valves for easy installation

Typical Application

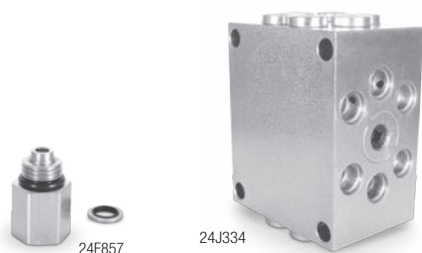
Steel mills, pulp and paper processing, high temperature and dirty environments

Technical Specifications

Trabon USP Series	Maximum Pressure, bar (psi)	Output Twin Outlet, cm ³ (in ³)	Output Single Outlet, cm ³ (in ³)	Cycle Indication
USP6 - USP8 - USP10 USP12 - USP14 - USP16	350 (5,076)	-	0.20 (0.012)	Electronic proximity switch, magnetic visual indicator
Trabon MD Series	Maximum Pressure, bar (psi)	Output Twin Outlet, cm ³ (in ³)	Output Single Outlet, cm ³ (in ³)	Cycle Indication
MD-2	207 (3,000)	-	0.66 (0.04)	Cycle indicator switch
MD-3	207 (3,000)	-	Outlet 1 - 0.66 (0.04) Outlet 2 & 3 - 0.33 (0.02)	
MD-4	207 (3,000)	-	0.33 (0.02)	
MD-6	207 (3,000)	-	0.16 (0.01)	Not available
Trabon MJ Series	Maximum Pressure, bar (psi)	Output Twin Outlet, cm ³ (in ³)	Output Single Outlet, cm ³ (in ³)	Cycle Indication
MJ5	138 (2,000)	0.08 (0.005)	0.16 (0.010)	Not available
MJ10	138 (2,000)	0.16 (0.010)	0.33 (0.020)	Cycle indicator switch
MJ15	138 (2,000)	0.26 (0.015)	0.49 (0.030)	
Trabon MSP Series	Maximum Pressure, bar (psi)	Output Twin Outlet, cm ³ (in ³)	Output Single Outlet, cm ³ (in ³)	Cycle Indication
MSP5	241 (3,500)	0.08 (0.005)	0.16 (0.010)	Electronic proximity switch, magnetic visual indicator
MSP10	241 (3,500)	0.16 (0.010)	0.33 (0.020)	
MSP15	241 (3,500)	0.26 (0.015)	0.49 (0.030)	
MSP20	241 (3,500)	0.33 (0.020)	0.66 (0.040)	Electronic proximity switch, magnetic visual indicator, cycle indicator switch
MSP25	241 (3,500)	0.41 (0.025)	0.82 (0.050)	
MSP30	241 (3,500)	0.49 (0.030)	0.98 (0.060)	
MSP35	241 (3,500)	0.57 (0.035)	1.15 (0.070)	
MSP40	241 (3,500)	0.66 (0.040)	1.31 (0.080)	
Trabon MHH Series	Maximum Pressure, bar (psi)	Output Twin Outlet, cm ³ (in ³)	Output Single Outlet, cm ³ (in ³)	Cycle Indication
MHH6	517 (7,500)	0.098 (0.006)	0.197 (0.012)	Electronic proximity switch, magnetic visual indicator
MHH9	517 (7,500)	0.149 (0.009)	0.295 (0.018)	
MHH12	517 (7,500)	0.197 (0.012)	0.393 (0.024)	
MHH18	517 (7,500)	0.295 (0.018)	0.590 (0.036)	Electronic proximity switch, magnetic visual indicator, cycle indicator switch
MHH24	517 (7,500)	0.393 (0.024)	0.787 (0.048)	
MHH30	517 (7,500)	0.492 (0.030)	0.983 (0.060)	
Trabon MX Series	Maximum Pressure, bar (psi)	Output Twin Outlet, cm ³ (in ³)	Output Single Outlet, cm ³ (in ³)	Cycle Indication
MX25	207 (3,000)	0.41 (0.025)	0.82 (0.050)	Electronic proximity switch
MX50	207 (3,000)	0.82 (0.050)	1.64 (0.100)	Electronic proximity switch, cycle indicator switch
MX75	207 (3,000)	1.23 (0.075)	2.46 (0.150)	
MX100	207 (3,000)	1.64 (0.100)	3.28 (0.200)	
MX125	207 (3,000)	2.05 (0.125)	4.10 (0.250)	
MX150	207 (3,000)	2.46 (0.150)	4.92 (0.300)	
Trabon MXP Series	Maximum Pressure, bar (psi)	Output Twin Outlet, cm ³ (in ³)	Output Single Outlet, cm ³ (in ³)	Cycle Indication
MXP25	207 (3,000)	0.41 (0.025)	0.82 (0.050)	Electronic proximity switch
MXP50	207 (3,000)	0.82 (0.050)	1.64 (0.100)	Electronic proximity switch, cycle indicator switch
MXP75	207 (3,000)	1.23 (0.075)	2.46 (0.150)	
MXP100	207 (3,000)	1.64 (0.100)	3.28 (0.200)	
MXP125	207 (3,000)	2.05 (0.125)	4.10 (0.250)	
MXP150	207 (3,000)	2.46 (0.150)	4.92 (0.300)	
Trabon MGO Series	Maximum Pressure, bar (psi)	Output Twin Outlet, cm ³ (in ³)	Output Single Outlet, cm ³ (in ³)	Cycle Indication
MGO150	Up to 413 (6,000)	2.46 (0.150)	4.92 (0.300)	Electronic proximity switch, cycle indicator switch
MGO300	Up to 413 (6,000)	4.92 (0.300)	9.83 (0.600)	
MGO450	Up to 413 (6,000)	7.37 (0.450)	14.7 (0.900)	
MGO600	Up to 413 (6,000)	9.83 (0.600)	19.7 (1.200)	
Air Oil Series	Minimum Pressure, bar (psi)	Maximum Pressure, bar (psi)	Output Single/Twin Outlet, cm ³ (in ³)	Cycle Indication
24B240	3.1 (45)	17 (250)	see MSP	see MSP

Ordering Information

Trabon® USP Mono Block



USP Valves w/Adapters	
24E406	USP 6 Outlet Mono Block
24E407	USP 8 Outlet Mono Block
24E408	USP 10 Outlet Mono Block
24E409	USP 12 Outlet Mono Block
24E410	USP 14 Outlet Mono Block
24E411	USP 16 Outlet Mono Block
USP Bare Blocks w/o Adapters	
24J331	USP 6 Outlet Mono Block
24J332	USP 8 Outlet Mono Block
24J333	USP 10 Outlet Mono Block
24J334	USP 12 Outlet Mono Block
24J335	USP 14 Outlet Mono Block
24J336	USP 16 Outlet Mono Block
USP Accessories	
24E857	Outlet Adapter and Seal
125011	Seal
24N007	Weld Bar for 6 and 8 Outlet Valves
24N008	Weld Bar for 10 and 12 Outlet Valves
24N009	Weld Bar for 14 and 8 Outlet Valves

Trabon® MD Divider Valves



MD Divider Valves	
562656	MD-2
562657	MD-3
562658	MD-4
562659	MD-6
562653	MD-2, Cycle Pin
562654	MD-3, Cycle Pin
562655	MD-4, Cycle Pin
563270	MD-2, Cycle Switch, Bracket Assembly
563271	MD-3, Cycle Switch, Bracket Assembly
564356	MD-4, Cycle Switch, Bracket Assembly
MD Spare Parts	
563555	Cycle Indicator End Plug Assembly
556540	Standard MD O-Ring

Ordering Information

Trabon® MJ Divider Valves



MJ Tie Rods and Nut (Two required per assembly)	
557515	3-Section Tie Rod
557516	4-Section Tie Rod
557517	5-Section Tie Rod
557518	6-Section Tie Rod
557519	7-Section Tie Rod
557520	8-Section Tie Rod
560649	9-Section Tie Rod
556371	Tie Rod Nut
MJ Miscellaneous Accessories	
562915	Singling Kit
562914	Crossport Bar
557359	Crossport Kit - Upper Seal
557503	Crossport Kit - Lower Seal
561101	Mounting Bar
MJ Spare Parts	
557514	Replacement Gasket
563948	Cycle Indicator Repair Kit
563272	MJ Cycle Switch (SPDT) Bracket Assembly
563273	MJ Cycle Switch (SPDT) Bracket Assembly - Moisture Resistant
MJ Working Sections (Must be ordered in multiples of five)	
562500	MJ-5S
562501	MJ-10S
562502	MJ-15S
562503	MJ-5T
562504	MJ-10T
562505	MJ-15T
MJ w/Cycle Pin - Right (Must be ordered in multiples of five)	
562508	MJ-10S
562509	MJ-15S
562510	MJ-10T
562511	MJ-15T
MJ Inlet and End (Must be ordered in multiples of five)	
560643	MJ Inlet
560645	MJ End

Trabon® MSP Divider Valves



*Pre-Assembled and
Tested Base Plates
Now Available!*

MSP Working Sections (Must be ordered in multiples of five)	
562711	MSP-5S
562712	MSP-10S
562713	MSP-15S
562714	MSP-20S
562715	MSP-25S
562716	MSP-30S
562717	MSP-35S
562718	MSP-40S
562720	MSP-5T
562721	MSP-10T
562722	MSP-15T
562723	MSP-20T
562724	MSP-25T
562725	MSP-30T
562726	MSP-35T
562727	MSP-40T
562660	MSP By-Pass Section
MSP w/Cycle Pin - Right (Must be ordered in multiples of five)	
562729	MSP-20S
562730	MSP-25S
562731	MSP-30S
562732	MSP-35S
562733	MSP-40S
562739	MSP-20T
562740	MSP-25T
562741	MSP-30T
562742	MSP-35T
562743	MSP-40T
MSP w/Cycle Pin - Left (Must be ordered in multiples of five)	
562734	MSP-20S
562735	MSP-25S
562736	MSP-30S
562737	MSP-35S
562738	MSP-40S
562744	MSP-20T
562745	MSP-25T
562746	MSP-30T
562747	MSP-35T
562748	MSP-40T

Ordering Information

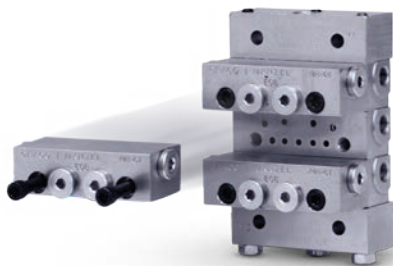
MSP Inlets, Intermediate Base and End Sections (Must be ordered in multiples of five)	
560919	Inlet, 1/4-18 NPSF Ports (NPT)
560936	Inlet, 1/4-19 BSPP (ISO 1179) Ports (BSP)
560943	Inlet, 7/16-20 UNF-2B Ports (SAE)
560976	Inlet, ISO 6149-1-M12 x 1.5 Ports (MET)
563421	Inlet, NPSF, Bleed Ports
563422	Inlet, SAE, Bleed Ports
563425	Intermediate Base, 1/8-27 NPSF Ports (NPT)
563451	Intermediate Base, 7/16-20 UNF-2B Ports (SAE)
563447	Intermediate Base, 1/8-28 BSPP (ISO 1179) Ports (BSP)
563479	Intermediate Base, No Outlets
563424	Standard End
563279	End, Alternate Inlet Port Plug
563480	MSP Modular Filter Block
MSP Shunt Inlets	
563448	NPT, 115 VAC, Hirschmann Connection - Left (NC)
563452	NPT, 115 VAC, BH 3-Pin Connection - Right (NO)
563453	NPT, 115 VAC, BH 3-Pin Connection - Left (NC)
563454	NPT, 24 VDC, BH 3-Pin Connection - Right (NO)
563455	NPT, 24 VDC, BH 3-Pin Connection - Left (NC)
560953	SAE, 115 VAC, BH 3-Pin Connection - Right (NO)
563463	SAE, 115 VAC, BH 3-Pin Connection - Left (NC)
563482	SAE, 24 VDC, BH 3-Pin Connection - Right (NO)
563483	SAE, 24 VDC, BH 3-Pin Connection - Left (NC)
563493	BSPP, 24 VDC, BH 3-Pin Connection - Right (NO)
563494	BSPP, 24 VDC, BH 3-Pin Connection - Left (NC)
557213	Replacement Solenoid - 563452, 563453
557215	Replacement Solenoid - 563454, 563455
557214	Replacement Coil - 563452, 563453
563456	NPT Pneumatic Shunt Inlet
MSP Zero-Leak Shut-Off Inlets	
563457	115 VAC, 12 in. 2-Wire Lead Connection, 1/4-18 NPT Port Thread
563460	115 VAC, BH 3-Pin Connection, 1/4-18 NPT Port Thread
563468	115 VAC, BH 3-Pin Connection, 9/16-18 SAE Port Thread
563464	24 VDC, BH 3-Pin Connection, 1/4-18 NPT Port Thread
563467	24 VDC, BH 3-Pin Connection, 9/16-18 SAE Port Thread
563074	Inlet restrictor
558021	6 ft (3 Pin) Mini-Straight Cable
558799	BSPP (ISO1170) plug
558022	12 ft (3 Pin) Mini-Straight Cable
567251	SAE plug with o-ring
563481	MSP Zero-Leak (w/o Manual Override) Solenoid Valve Section, w/o Coil
557349	NPT plug
557226	Replacement Coil - 563460, 563468
557225	Replacement Coil - 563464, 563467
MSP Repair and Zero-Leak Kits	
563933	Valve Repair Kit - Cartridge w/out Coil, Screws, Seat, Nut Wrench

563461	MSP Zero Leak/Shunt Inlet Mount Kit
MSP Tie Rods and Nut	
557731	3-Section Tie Rod
557732	4-Section Tie Rod
557733	5-Section Tie Rod
557734	6-Section Tie Rod
557735	7-Section Tie Rod
557736	8-Section Tie Rod
557738	9-Section Tie Rod
557739	10-Section Tie Rod
557740	11-Section Tie Rod
556371	Tie Rod Nut
Accessories	
563469	Crossport Bar, Right
563470	Crossport Bar, Left
563471	Crossport Bar, Right and Left
563472	Stacking Bar
563444	Counter
563465	Weld Bar Kit
563251	No Weep Cycle Indicator
556540	MSP standard o-ring (BUNA-N), black
122276	MSV high pressure o-ring (90 DURO Fluoroelastomer), green
556371	MSP tie rod nut (3 required per assembly)
557776	MSP indicator port plug
563929	MSP Cycle pin indicator repair kit, o-ring
563928	MSP Cycle pin indicator repair kit, gasket
MSP Base Plate Assemblies	
24G485	MSP - 3 Section, NPSF
24G486	MSP - 4 Section, NPSF
24G487	MSP - 5 Section, NPSF
24G488	MSP - 6 Section, NPSF
24G489	MSP - 7 Section, NPSF
24G490	MSP - 8 Section, NPSF
24N915	MSP - 3 Section, BSPP
24N916	MSP - 4 Section, BSPP
24N917	MSP - 5 Section, BSPP
24N918	MSP - 6 Section, BSPP
24N919	MSP - 7 Section, BSPP
24N920	MSP - 8 Section, BSPP
MSP Modular Zero-Leak Components	
563479	MSP Zero-Leak Solenoid Valve Base Plate
563481	MSP Zero-Leak (w/o Manual Override) Solenoid Valve Section, w/o Coil
558893	3 Pin Mini Connector Adaptor w/Indicator Light - 120 VAC
557226	Solenoid Coil - 120 VAC (3 Pin Mini)
557225	Solenoid Coil - 24 VDC (3 Pin Mini)
558886	Solenoid Coil - 24 VDC (4 Pin Micro)
558021	Brad Harrison Mating Cable , 6 ft (3 Pin) Mini-Straight
558022	Brad Harrison Mating Cable , 12 ft (3 Pin) Mini-Straight
563279	"Bottom-Feed" End Section w/ Port Plug
556429	"Bottom-Feed" Hydraulic Fitting
557349	"Bottom-Feed" Port Plug

Ordering Information

MSP Modular Filter Section	
563479	MSP Modular Filter Base Plate, 25 microns nominal
563480	MSP Modular Filter Block
Mounting Accessories	
560920	Mounting Bar 4" (101.6) x 1-3/4" (44.5) (B) 1" (25.4) with 1/4"-20 thread
563435	Top Mounting Bracket (A) 3-37/64" (90.9) (B) 4-1/2" (114.3) (C) 5-21/32" (143.7)
563436	TOP Mounting Bracket (A) 5-27/64" (137.7) (B) 6-11/32" (161.1) (C) 7-1/2" (190.5)
563437	TOP Mounting Bracket (A) 7-17/64" (184.5) (B) 8-3/16" (208.0) (C) 9-11.32" (237.3)
563438	Side Mounting Bracket (A) 3-37/64" (90.9) (B) 4-1/4" (114.3) (C) 6-5/8" (168.3) (D) 3-7/8 (187.3) (E) 5-5/8 (142.9)
563439	Side Mounting Bracket (A) 5-27/64" (137.7) (B) 6-11/32" (161.1) (C) 8-15.32" (215.5) (D) 9-7/32 (234.2) (E) 7-15/32 (198.7)
563440	Side Mounting Bracket (A) 7-17/64" (184.5) (B) 8-3/16" (208.0) (C) 10-5/8" (262.0) (D) 11-1/16 (281.0) (E) 9-5/16 (236.5)

Manzel® MHH Divider Valves



*Pre-Assembled and
Tested Base Plates
Now Available!*

MHH Working Sections (Must be ordered in multiples of five)	
562679	MHH-6S
562680	MHH-9S
562681	MHH-12S
562682	MHH-18S
562683	MHH-24S
562684	MHH-30S
562685	MHH-6T
562686	MHH-9T
562687	MHH-12T
562688	MHH-18T
562689	MHH-24T
562690	MHH-30T
MHH Base Plate Assemblies - Inlet, Intermediates, Ends and Tie Rods	
24F596	MHH - 3 Section, NPSF
24F597	MHH - 4 Section, NPSF
24F598	MHH - 5 Section, NPSF
24F599	MHH - 6 Section, NPSF
24F600	MHH - 7 Section, NPSF
24F601	MHH - 8 Section, NPSF
MHH Base Plate Assemblies - Inlet, Intermediates, Ends and Tie Rods	
24F596	MHH - 3 Section, NPSF

24F597	MHH - 4 Section, NPSF
24F598	MHH - 5 Section, NPSF
24F599	MHH - 6 Section, NPSF
24F600	MHH - 7 Section, NPSF
24F601	MHH - 8 Section, NPSF
MHH Inlets, Intermediates and Ends (must be ordered in multiples of five)	
560919	Inlet, 1/4-18 NPSF (NPT)
560936	Inlet, 1/4-19 BSPP
560943	Inlet, 7/16-20 UNF-28 (SAE)
560976	Inlet, 150 6149-1-M12X15
563421	Inlet, NPSF, Bleed Ports
563422	Inlet, SAE, Bleed Ports
563424	End, NPSF
563425	Intermediate, 1/8-27 NPSF
MHH Tie Rods and Nut (must be ordered in multiples of five)	
557731	3-Section Tie Rod
557732	4-Section Tie Rod
557733	5-Section Tie Rod
557734	6-Section Tie Rod
557735	7-Section Tie Rod
557736	8-Section Tie Rod
556371	Tie Rod Nut
Accessories	
563469	Crossport Bar, Right
563470	Crossport Bar, Left
563471	Crossport Bar, Right and Left
563472	Stacking Bar
563444	Counter
563465	Weld Bar Kit
563251	No Weep Cycle Indicator
556540	Standard o-ring (BUNA-N), black
122276	High pressure o-ring (90 DURO Fluoroelastomer), green
556371	Tie rod nut (3 required per assembly)
557776	Indicator port plug
563929	Cycle pin indicator repair kit, o-ring
558799	BSPP (ISO1170) plug
567251	SAE plug with o-ring
557349	NPT plug
563928	Cycle pin indicator repair kit, gasket
Mounting	
560920	Mounting Bar 4" (101.6) x 1-3/4" (44.5) (B) 1" (25.4) with 1/4"-20 thread
563435	Top Mount Bracket (A) 3-37/64" (90.9) (B) 4-1/2" (114.3) (C) 5-21/32" (143.7)
563436	Top Mount Bracket (A) 5-27/64" (137.7) (B) 6-11/32" (161.1) (C) 7-1/2" (190.5)
563437	Top Mount Bracket (A) 7-17/64" (184.5) (B) 8-3/16" (208.0) (C) 9-11.32" (237.3)
563438	Side Mount Bracket (A) 3-37/64" (90.9) (B) 4-1/4" (114.3) (C) 6-5/8" (168.3) (D) 3-7/8 (187.3) (E) 5-5/8 (142.9)
563439	Side Mnt. Bracket (A) 5-27/64" (137.7) (B) 6-11/32" (161.1) (C) 8-15.32" (215.5) (D) 9-7/32 (234.2) (E) 7-15/32 (198.7)
563440	Side Mount Bracket (A) 7-17/64" (184.5) (B) 8-3/16" (208.0) (C) 10-5/8" (262.0) (D) 11-1/16 (281.0) (E) 9-5/16 (236.5)

Ordering Information

Trabon® MX Divider Valves



MX Working Sections	
562514	MX-25S
562515	MX-25T
562516	MX-50S
562517	MX-50T
562538	MX-75S
562539	MX-75T
562540	MX-100S
562541	MX-100T
562542	MX-125S
562543	MX-125T
562545	MX-150S
562546	MX-150T
MX w/Cycle Pin (Must be ordered in multiples of two)	
562523	MX-50T, w/Cycle Pin Indicator, Right
562518	MX-50S, w/Cycle Pin Indicator, Right
562524	MX-75T, w/Cycle Pin Indicator, Right
562519	MX-75S, w/Cycle Pin Indicator, Right
562525	MX-100T,, w/Cycle Pin Indicator, Right
562520	MX-100S, w/Cycle Pin Indicator, Right
562526	MX-125T, w/Cycle Pin Indicator, Right
562521	MX-125S, w/Cycle Pin Indicator, Right
562527	MX-150T, w/Cycle Pin Indicator, Right
562522	MX-150S, w/Cycle Pin Indicator, Right
562533	MX-50T, w/Cycle Pin Indicator, Left
562528	MX-50S, w/Cycle Pin Indicator, Left
562534	MX-75T, w/Cycle Pin Indicator, Left
562529	MX-75S, w/Cycle Pin Indicator, Left
562569	MX-100T, w/Cycle Pin Indicator, Left
562530	MX-100S, w/Cycle Pin Indicator, Left
562535	MX-125T, w/Cycle Pin Indicator, Left
562531	MX-125S, w/Cycle Pin Indicator, Left
562536	MX-150T, w/Cycle Pin Indicator, Left
562532	MX-150S, w/Cycle Pin Indicator, Left
MX Tie Rods and Nut	
557488	3-Section Tie Rod
557489	4-Section Tie Rod
557490	5-Section Tie Rod
557491	6-Section Tie Rod

557492	7-Section Tie Rod
557493	8-Section Tie Rod
560576	9-Section Tie Rod
560577	10-Section Tie Rod
557494	Tie Rod Nut
MX Intermediate Base and End Sections	
560620	MX Inlet
563287	MX End
Accessories	
562916	Singling Bar
562917	MX Cross Port Bar, RH or LH
561102	MX Mounting Bar
557509	MX Intermediate Gasket (1 required per section)
557494	MX Tie Rod Nut (8 required per assembly)
557323	MX Enclosure Plug Seal, Gasket
557391	1/4" NPT Outlet Plug for Singled and Cross Ported MX Sections
563917	MX Cycle Indicator Pin Repair Kit, Current Style

Ordering Information

Trabon® MXP Divider Valves



MXP Working Sections (Must be ordered in multiples of two)	
562813	MXP-25T
562819	MXP-25S
562814	MXP-50T
562820	MXP-50S
562815	MXP-75T
562821	MXP-75S
562816	MXP-100T
562822	MXP-100S
562817	MXP-125T
562823	MXP-125S
562818	MXP-150T
562824	MXP-150S
562835	MXP bypass
MXP w/Cycle Pin - Right (Must be ordered in multiples of two)	
562830	MXP-50S
562831	MXP-75S
562832	MXP-100S
562833	MXP-125S
562834	MXP-150S
562825	MXP-50T
562826	MXP-75T
562827	MXP-100T
562828	MXP-125T
562829	MXP-150T
MXP Inlet, Intermediate Base and End Sections (Must be ordered in multiples of five)	
15R994	Inlet, 3/4-16 SAE O-Ring Ports
15R993	Inlet, 3/8-18 NPSF
561029	Inlet, 3/8-19 BSPP (ISO 1179)
563519	Intermediate Base, 1/4-18 NPSF
563521	Intermediate Base, 9/16-18 SAE O-Ring
563522	Intermediate Base, 1/4-19 BSPP (ISO 1179)
563527	Intermediate Base w/out Outlet Check, 1/4-18 NPSF
563518	End Section
MXP Tie Rods and Nut (Three required per assembly)	
557766	3-Section Tie Rod
557767	4-Section Tie Rod
557768	5-Section Tie Rod
557769	6-Section Tie Rod

557770	7-Section Tie Rod
557771	8-Section Tie Rod
557772	9-Section Tie Rod
563520	10-Section Tie Rod
555406	Tie Rod Nut
MXP Accessories	
563524	Cross Port, Left
563525	Cross Port, Right
563526	Cross Port, Left and Right
557773	MXP Standard Value Section Seal, O-ring (90 DURO Fluoroelastomer)
555406	MXP Tie Rod Nut (3 required per assembly)
563917	MXP Cycle Pin Indicator Repair Kit, New Style
557774	MXP Enclosure Plug
556572	Enclosure Plug O-ring
557776	MXP Indicator Port Plug
561102	Mounting Bar

Ordering Information

Trabon® MGO Divider Valve



MGO Working Sections	
562570	MGO-150S
562571	MGO-300S
562572	MGO-450S
562573	MGO-600S
562574	MGO-150T
562575	MGO-300T
562576	MGO-450T
562577	MGO-600T
MGO w/Cycle Pin - Right	
562578	MGO-150S
562579	MGO-300S
562580	MGO-450S
562581	MGO-600S
562582	MGO-150T
562583	MGO-300T
562584	MGO-450T
562585	MGO-600T
MGO Inlet and End	
563277	MGO Inlet
563278	MGO End
MGO Spare Parts	
556424	Singled Ported Sections Port Plug
563926	1-Section O-Ring Kit
MGO Tie Rods and Nut (Two (2) short tie rods and two (2) long tie rods required per assembly)	
560591	3-Section Tie Rod - Short
560592	4-Section Tie Rod - Short
560593	5-Section Tie Rod - Short
560594	6-Section Tie Rod - Short
560595	7-Section Tie Rod - Short
560596	8-Section Tie Rod - Short
560597	9-Section Tie Rod - Short
560598	10-Section Tie Rod - Short
560599	11-Section Tie Rod - Short
560600	3-Section Tie Rod - Long
560601	4-Section Tie Rod - Long

560602	5-Section Tie Rod - Long
560603	6-Section Tie Rod - Long
15U857	7-Section Tie Rod - Long
560604	8-Section Tie Rod - Long
560605	9-Section Tie Rod - Long
560606	10-Section Tie Rod - Long
560607	11-Section Tie Rod - Long
557494	Tie Rod Nut (2 required per tie rod)
AO Series Divider Valves	
24B237	Air/Oil Manifold Assembly, 3-Section
24B239	Air/Oil Manifold Assembly, 4-Section
24B240	Air/Oil Manifold Assembly, 5-Section
24B241	Air/Oil Manifold Assembly, 6-Section
24J814	Air/Oil Manifold Assembly, 3-Section without Air Sensor
24J815	Air/Oil Manifold Assembly, 4-Section without Air Sensor
24J816	Air/Oil Manifold Assembly, 5-Section without Air Sensor
24J817	Air/Oil Manifold Assembly, 6-Section without Air Sensor

Notes



ABOUT GRACO

Founded in 1926, Graco is a world leader in fluid handling systems and components. Graco products move, measure, control, dispense and apply a wide range of fluids and viscous materials used in vehicle lubrication, commercial and industrial settings.

The company's success is based on its unwavering commitment to technical excellence, world-class manufacturing and unparalleled customer service. Working closely with qualified distributors, Graco offers systems, products and technology that set the quality standard in a wide range of fluid handling solutions. Graco provides equipment for spray finishing, protective coating, paint circulation, lubrication, and dispensing sealants and adhesives, along with power application equipment for the contractor industry. Graco's ongoing investment in fluid management and control will continue to provide innovative solutions to a diverse global market.

GRACO LOCATIONS

MAILING ADDRESS

P.O. Box 1441
Minneapolis, MN 55440-1441
Tel: 612-623-6000
Fax: 612-623-6777

AMERICAS

MINNESOTA

Worldwide Headquarters
Graco Inc.
88-11th Avenue N.E.
Minneapolis, MN 55413

EUROPE

BELGIUM

European Headquarters
Graco BVBA
Industrieterrein-Oude Bunders
Slakweidestraat 31
3630 Maasmechelen,
Belgium
Tel: 32 89 770 700
Fax: 32 89 770 777

ASIA PACIFIC

AUSTRALIA

Graco Australia Pty Ltd.
Suite 17, 2 Enterprise Drive
Bundoora, Victoria 3083
Australia
Tel: 61 3 9468 8500
Fax: 61 3 9468 8599

CHINA

Graco Hong Kong Ltd.
Shanghai Representative Office
Building 7
1029 Zhongshan Road South
Huangpu District
Shanghai 200011
The People's Republic of China
Tel: 86 21 649 50088
Fax: 86 21 649 50077

INDIA

Graco Hong Kong Ltd.
India Liaison Office
Room 432, Augusta Point
Regus Business Centre 53
Golf Course Road
Gurgaon, Haryana
India 122001
Tel: 91 124 435 4208
Fax: 91 124 435 4001

JAPAN

Graco K.K.
1-27-12 Hayabuchi
Tsuzuki-ku
Yokohama City, Japan 2240025
Tel: 81 45 593 7300
Fax: 81 45 593 7301

KOREA

Graco Korea Inc.
Shinhan Bank Building
4th Floor #1599
Gwanyang-Dong, Dongan-Ku,
Anyang-si, Korea 431-060
Tel: 82 31 476 9400
Fax: 82 31 476 9801

All written and visual data contained in this document are based on the latest product information available at the time of publication. Graco reserves the right to make changes at any time without notice.

Graco is certified ISO 9001.

Europe
+32 89 770 700
FAX +32 89 770 777
WWW.GRACO.COM

©2011, 2013 Graco BVBA 340800ENEU Rev. B 01/13 Printed in Europe.
All other brand names or marks are used for identification purposes and are trademarks of their respective owners.