

Dyna-Star® HP and Dyna-Star® HF Electric Lubrication Pumps



Trusted lubrication solutions designed
to keep your equipment and technicians
working at peak performance



PROVEN QUALITY. LEADING TECHNOLOGY.

The Graco Advantage

New innovations, like tube-in-tube vent and fill path, Advantage Drive™, and adjustable motor controls give you mobile lubrication capabilities like never before. Super-efficient design delivers the right amount of lubrication at the right time—all in a neat compact system.

Versatile and Hassle Free

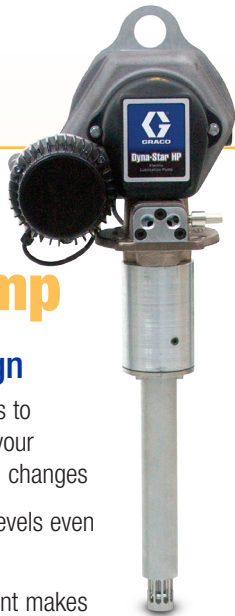
- 24 VDC electric lubrication pump
- Supplies grease to injector-based, series progressive and dual line metering systems
- High pressure (HP) model is capable of 5,000 psi (344 bar) with a maximum output of 18 cubic inches (295 cc) per minute
- High flow (HF) model is capable of 3,400 psi (241 bar) with a maximum output of 25 cubic inches (410 cc) per minute



Dyna-Star® Electric Pump

New Innovative Design

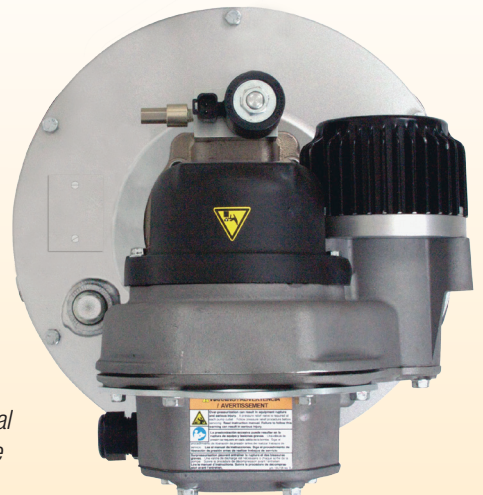
- Ability to adjust motor controls to perfectly match the pump to your application and environmental changes
- Maintains high performance levels even in cold weather to -40° C
- Easy, efficient seal replacement makes repairs quick to get you back to work fast



Top Quality Lubrication for:

- Mining Operations
- Heavy-duty Construction
- Industrial Applications
- Milling and Crushing
- Well Services

Compact design saves deck space, has fewer moving parts for less repair, and no remote mounted components for easier installation. You get reliable service and minimal downtime for best-practice mobile lubrication.



Equipment That Works as Hard as You

Safely Move Pump

Built-in lift ring is rated to 500 lbs (226 kg)

Graco Advantage Drive™

High quality helical hardened steel gears are lubricated for life and sealed to keep contaminants out for longer lasting performance. Field-proven for the last ten years to be the longest lasting drive in the industry.

Direct Mount Electric Vent Valve

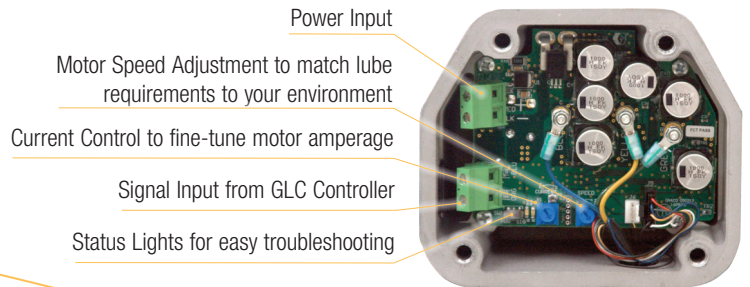
Mounts directly to pump with no special brackets or hoses for a compact design and less parts to break or wear out. Deutsch connector is IP69K rated to keep out moisture. Built-in pressure relief for safety and compact, efficient installations.

Cavitation-free Fill and Vent Path

Provides simple and direct venting and filling to the foot of the pump. No cavitation due to improper filling and venting with no external vent hoses or extra internal pipes. Convert a standard drum to an injector pump station in minutes.

Strong 12 Gauge Steel Reservoir

Available in 60 lb (27 kg) or 90 lb (41 kg) reservoirs with alternate fill and vent ports that deliver lube straight to the bottom of the pump. Common bolt pattern for easy drop-in replacement without drilling or adapter plates.



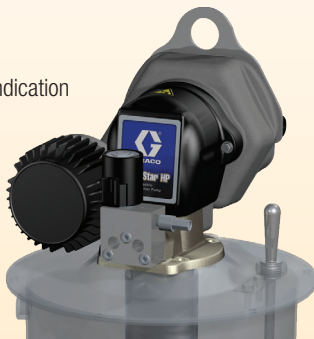
Adjustable Motor Control



Easy Lube Level Monitoring

Dip Stick >

For simple visual indication of lube level



Low Level >

Quick visual level indication with electronic signal to GLC 2200 or GLC 4400 controller



AMERICAS

MINNESOTA

Worldwide Headquarters
Graco Inc.
88-11th Avenue N.E.
Minneapolis, MN 55413

MAILING ADDRESS

P.O. Box 1441
Minneapolis, MN 55440-1441
Tel: 612-623-6000 Fax: 612-623-6777

EUROPE

BELGIUM

European Headquarters
Graco N.V.
Industrieterrein-Oude Bunders
Slakweidestraat 31
3630 Maasmechelen,
Belgium
Tel: 32 89 770 700 Fax: 32 89 770 777

ASIA PACIFIC

AUSTRALIA

Graco Australia Pty Ltd.
Suite 17, 2 Enterprise Drive
Bundoora, Victoria 3083
Australia
Tel: 61 3 9468 8500 Fax: 61 3 9468 8599

CHINA

Graco Hong Kong Ltd.
Shanghai Representative Office
Building 7
1029 Zhongshan Road South,
Huangpu District
Shanghai, 200011
The People's Republic of China
Tel: 86 21 649 50088 Fax: 86 21 649 50077

INDIA

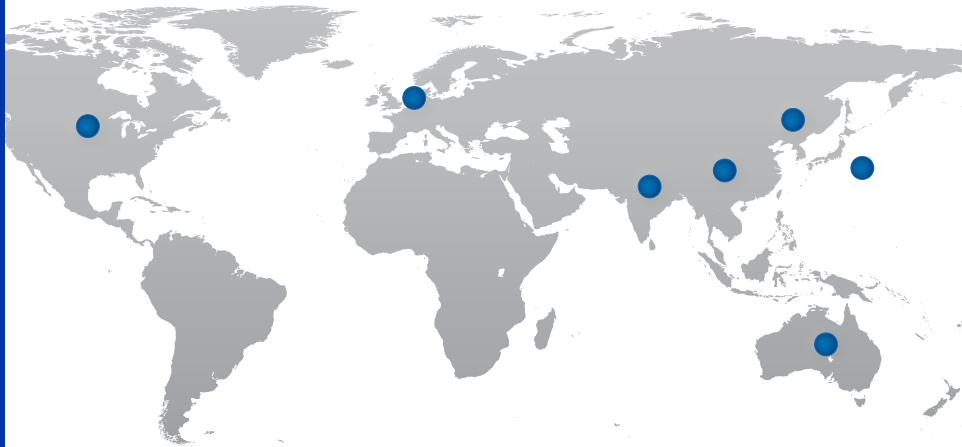
Graco Hong Kong Ltd.
India Liaison Office
Room 443, Augusta Point
Regus Business Centre 53
Golf Course Road
Gurgaon, Haryana
India 122001
Tel: 91 124 435 4208 Fax: 91 124 435 4001

JAPAN

Graco K.K.
1-27-12 Hayabuchi
Tsuzuki-ku
Yokohama City, Japan 2240025
Tel: 81 45 593 7300 Fax: 81 45 593 7301

KOREA

Graco Korea Inc.
Shinhan Bank Building
4th Floor #1599
Gwanyang-Dong, Dongan-Ku,
Anyang-si, Korea 431-060
Tel: 82 31 476 9400 Fax: 82 31 476 9801



Graco's got you covered

Facilities Worldwide for Global Support



Quality First

At Graco we pride ourselves on providing best-in-class products. Engineered solutions are manufactured in our own facilities, with the highest standards in the industry. We provide you with world-class customer support and expertise to help solve your lubrication challenges.



Global Reach

Graco has facilities and distribution partners across the globe to provide you with the products and service *you* need, where *you* live. Plus, Graco has dedicated field experts in all areas of the world to support the products we sell.



Product Capabilities

Graco has a broad range of products to provide solutions that meet your needs. Our products are engineered and tested to perform in the harshest environments so you can be certain your equipment is protected and working at peak performance.

Contact us today!

Call **800-533-9655** to speak with a Graco representative,
or visit **www.graco.com** for more information.

