

GENUINE GRACO PARTS AND ACCESSORIES

# 563933 MSP Bubble Tight Inlet Shut-Off Valve Repair Kit

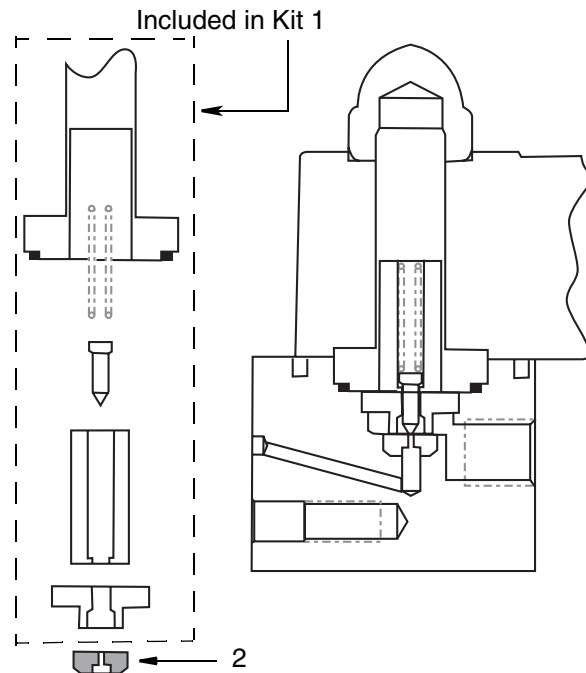


## Important Safety Instructions

Read all warnings and instructions in manual. Save these instructions.

406684B

Ref.	Description	Qty.
1	KIT, solenoid	1
2	SEAT, nylon	1
3	NUT, wrench (not shown)	1
4	SCREW, 1 1/4-6 flat head (not shown)	1



Nylon seat (2) face down

ti10990a

Graco Inc. P.O. Box 1441 Minneapolis, MN 55440-1441

406684 Rev, B 06/2009

Copyright 2007, Graco Inc. is registered to ISO 9001



## Repair Instructions

### Disassembly

1. Remove the 1/2-20 acorn nut at the top of the solenoid coil and pull the coil off.
2. Slip the spanner nut (3, not shown) over rod. Insert into the two holes in the retaining disc. Loosen with a wrench.
3. Carefully remove the poppet valve components including the metal poppet guide disc below and inside the o-ring to expose the nylon valve seat. Put aside all parts in order of their removal and with a proper orientation to each other to serve as a guide for reassembly of parts removed.
4. Insert a 1-1/4 x 6 (4, not shown) all purpose screw into the end of a slide hammer (user provided) or similar device. Place the screw tip into the small hole in the center of the nylon seat and turn it approximately two turns into the seat.

**CAUTION:** The nylon seat is only 0.150 inch deep. Do not turn the screw in more than 1/8 inch in order to avoid damage to the valve body below the nylon seat.

5. Apply the slide-hammer action several times until the nylon seat is pulled completely free of the seat-well. Remove the used nylon seat and discard.

### Reassembly

1. Place a new nylon seat (2) with its chamfered hole downward over the nylon seat-well with its axis as vertical as possible.
2. Place the metal poppet-guide disc on top of the nylon seat and then a 0.600-0.660 inch O.D. metal cylinder (e.g., a 1/4 inch drive ratchet-wrench, 7/16 inch socket) on top of the disc. Tap the metal cylinder with a nylon hammer until the nylon seat is fully inserted into the well. Remove the metal-poppet guide disc to verify.
3. Reinstall the metal poppet-guide disc and the new valve components provided in the solenoid kit (1). Use the disassembly orientation from Step 3 as a reference. Discard used components when complete.
4. Tighten the poppet valve's retaining disc with the spanner nut (3) to 8-10 ft-lbs torque. Remove spanner nut.
5. Reinstall solenoid coil onto the valve rod and secure with the acorn nut tightened to 30-55 in-lbs torque.