

Return Line Filters ■ Type RFS



Product Description

STAUFF RFS Carbon Steel Return Line Filters are designed as tank top or in-line filters. They are mounted directly on the tank top and if 100% of the system oil is filtered, they provide the optimum removal of contaminants from the system. This provides the pump with clean oil thus reducing contaminant generated wear. The filter bowl is designed with a connection, threaded or flanged, for extending the return oil beneath the surface thus preventing the entrainment of air. A high efficiency of contaminant removal is assured by using STAUFF RE Replacement Filter Elements. The high dirt-hold capacity of STAUFF Elements ensures a long service life and as a result reduced maintenance costs.

Technical Data

Construction

- Tank Top mounting or in-line mounting

Materials

- Filter Housing: Carbon Steel
- Sealings: NBR (Buna-N®)
FPM (Viton®)
EPDM (Ethylene Propylene Diene Monomer Rubber)
Other sealing materials on request

Port Connection

- BSP
- SAE flange 3000 PSI

Flow Rating

- Up to 1135 l/min / 300 US GPM

Operating Pressure

- Max. 25 bar / 365 PSI

Proof Pressure

- Min. 37,5 bar / 545 PSI

Temperature Range

- -10°C ... +100°C / +14°F ... +212°F

Filter Elements

- Specifications see page C88

Media Compatibility

- Mineral oils, other fluids on request

Options and Accessories

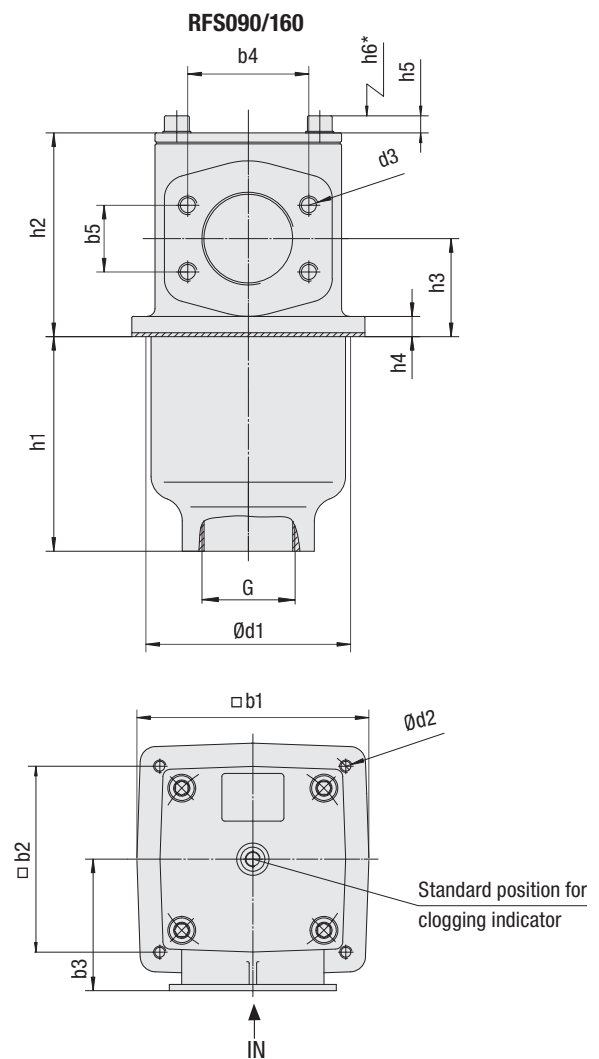
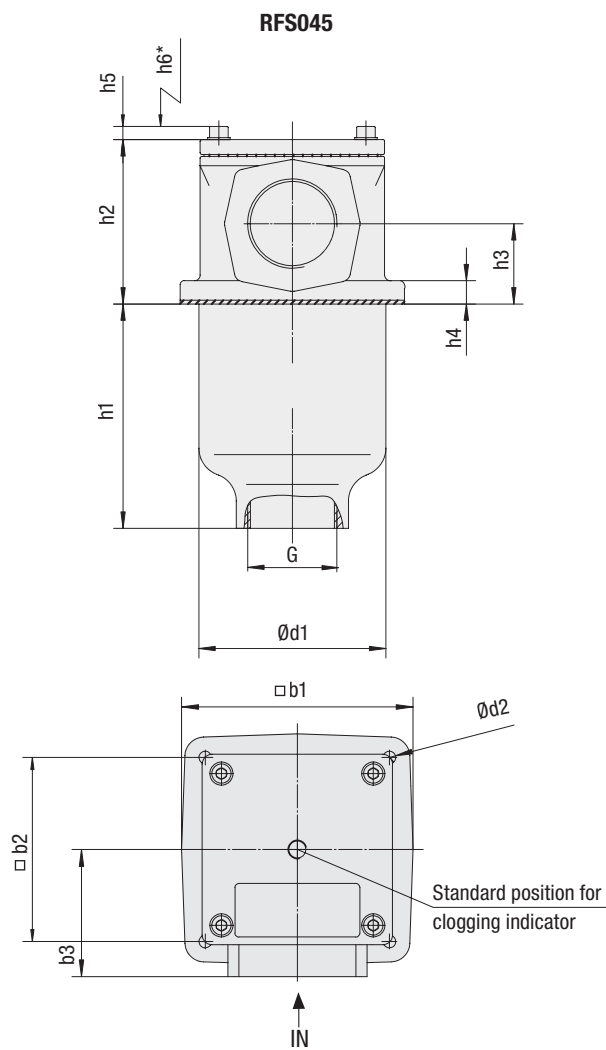
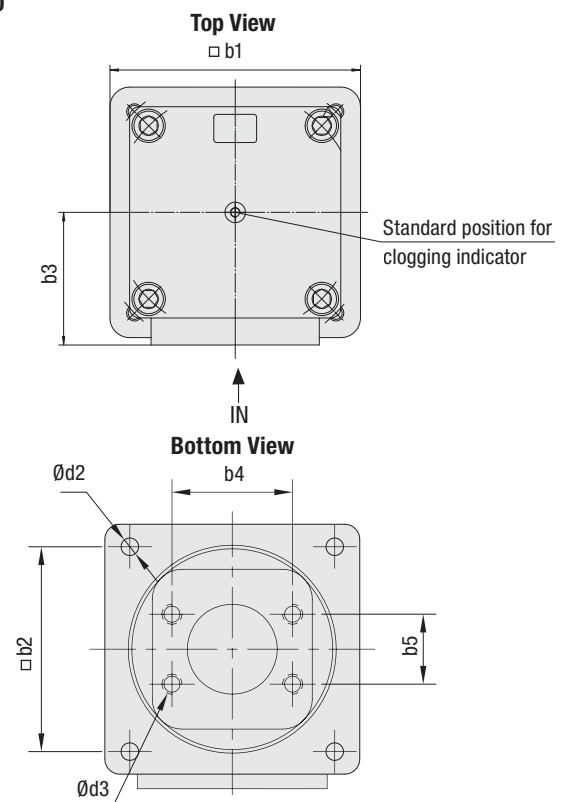
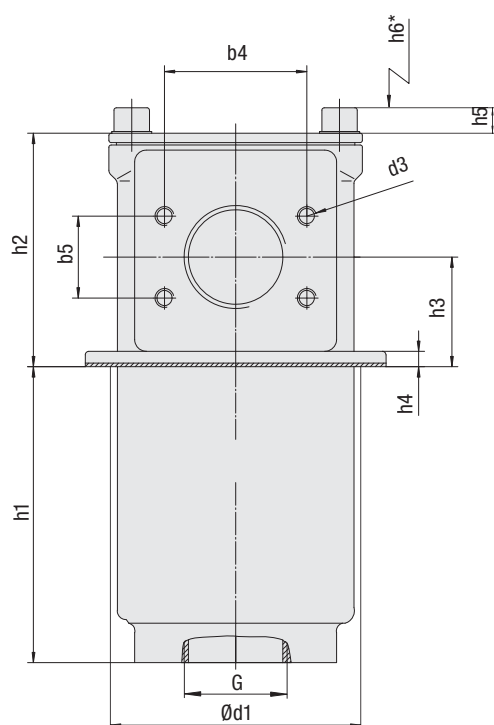
Valves

- Bypass valve (integrated in the filter element) Opening pressure 3 bar ± 0,3 bar / 43.5 PSI ± 4.35 PSI
Other settings available on request

Clogging Indicators

- Visual clogging indicator 0...4 bar / 0...58 PSI coloured segments
- Electrical clogging switch, setting 2,5 bar / 36.25 PSI
Other clogging indicators available on request

Return Line Filters ■ Type RFS

**RFS250/300**

* recommended space for element change

Return Line Filters ■ Type RFS

Thread Connection		Filter Size RFS				
		045	090	160	250	300
Inlet	BSP	1-1/2	2	-	-	-
	SAE Flange	-	2	3	3-1/2	4
Outlet G	BSP	1-1/2	2	3	-	-
	SAE Flange	-	-	-	3-1/2	4

Dimensions (mm/in)	Filter Size RFS				
	045	090	160	250	300
b1	120	150	196	255	255
	4.72	5.91	7.72	10.04	10.04
b2	95,5	120	155,5	205	205
	3.76	4.72	6.12	8.07	8.07
b3	66	85	110	135	145
	2.60	3.35	4.33	5.32	5.71
b4	-	77,8	106,4	120,7	130,2
	-	3.06	4.19	4.75	5.13
b5	-	42,9	61,9	69,5	77,8
	-	1.69	2.44	2.74	3.06
d1	100	135	180	208	208
	3.94	5.32	7.09	8.19	8.19
d2	6,5	9	13,5	17,5	17,5
	.26	.35	.53	.69	.69
d3	-	M12	M16	M16	M16
	-	1/2-UNC	5/8-UNC	5/8 UNC	5/8 UNC
h1	120	138	243	251	332
	4.72	5.43	9.57	9.88	13.07
h2	88	131	167	198	241
	3.47	5.16	6.57	7.80	9.49
h3	43	63	84	93	121
	1.69	2.48	3.31	3.66	4.76
h4	13	13	13	13	13
	.51	.51	.51	.51	.51
h5	7	12	12	12	12
	.28	.47	.47	.47	.47
h6	130	180	320	350	460
	5.11	7.09	12.60	13.78	18.11

Return Line Filter Housings / Complete Filters ■ Type RFS

RFS **250** **...** **...** **B** / **F** / **M** / **F** / **X**

1 2 3 4 5 6 7 8 9

1 Type

Carbon Steel Return Line Filter **RFS**

2 Group

Flow	Size
170 l/min / 45 US GPM	045
340 l/min / 90 US GPM	090
600 l/min / 160 US GPM	160
945 l/min / 250 US GPM	250
1135 l/min / 300 US GPM	300

Note: Exact flow will depend on filter element selected.
Consult technical data on pages C90 / C91.

3 Filter Material

Material	Max. Δp^* collapse	Micron ratings available	Code
Without filter element	-	-	...
Inorg. glass fibre	25 bar / 363 PSI	3, 5, 10, 20	G
Stainless fibre	30 bar / 435 PSI		A
Filter paper	10 bar / 145 PSI		N
Stainless mesh	30 bar / 435 PSI	25, 50, 100, 200	S

Note: *Collapse/burst resistance as per ISO 2941.
Other materials on request.

4 Micron Rating

3 µm	03
5 µm	05
10 µm	10
20 µm	20
25 µm	25
50 µm	50
100 µm	100
200 µm	200

Note: Other micron ratings on request.

5 Sealing Material

NBR (Buna®)	B
FPM (Viton®)	V
EPDM	E

Note: Other sealing materials on request.

6 Connection Style

Connection Style	Group					Code
	045	090	160	250	300	
BSP	1-1/2	2	-	-	-	G
SAE Flange 3000 PSI	-	2	3	3-1/2	4	F

7 Clogging Indicator

	Position*		Code
Without Clogging Indicator	-		0
Visual Clogging Indicator	1	2	M
Electrical Clogging Switch 42 V, NO			G42NO
Electrical Clogging Switch 42 V, NC			G42NC
Electrical Clogging Switch 110 V, two-way contact			G110
Electrical Clogging Switch 230 V, two-way contact			G230

Note: *Position of clogging indicator see page C86.
Without any code: assembly in the middle of the filter cover.

8 Outlet Style

Connection Style	Group					Thread Style	Code
	045	090	160	250	300		
BSP	1-1/2	2	3	-	-	-	G
SAE Flange 3000 PSI	-	-	-	3-1/2	4	metric	FM
SAE Flange 3000 PSI	-	-	-	3-1/2	4	UNC	FU

9 Design Code

Only for information **X**

Filter Elements ■ Type RE

RE - **250** **G** **10** **B** / **X**

1 2 3 4 5 6

1 Type

Filter Element Series **RE**

2 Group

According to filter housing

3 Filter Material

Material	Max. Δp^* collapse	Micron ratings available	Code
Inorg. glass fibre	25 bar / 363 PSI	3, 5, 10, 20	G
Stainless fibre	30 bar / 435 PSI		A
Filter paper	10 bar / 145 PSI		N
Stainless mesh	30 bar / 435 PSI	25, 50, 100, 200	S

Note: *Collapse/burst resistance as per ISO 2941.
Other materials on request.

4 Micron Rating

3 µm	03
5 µm	05
10 µm	10
20 µm	20
25 µm	25
50 µm	50
100 µm	100
200 µm	200

Note: Other micron ratings on request.

5 Sealing Material

NBR (Buna®)	B
FPM (Viton®)	V
EPDM	E

Note: Other sealing materials on request.

6 Design Code

Only for information **X**

Return Line Filters ■ Type RFS

Visual Clogging Indicator

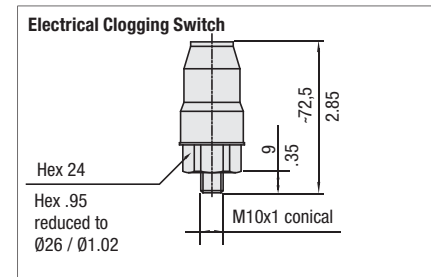
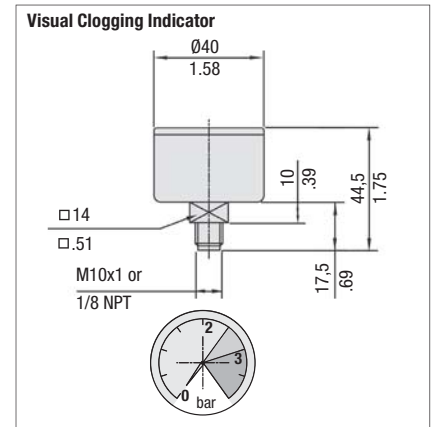
The gauge visually displays the degree of contamination of the element.
The colored segments allow quick visual checking.

green	0 ... 2,5 bar / 0 ... 36.25 PSI	Element has service life left
yellow	2,5 ... 3,0 bar / 36.25 ... 43.5 PSI	Element is contaminated and should be changed
red	>3,0 bar / >43.5 PSI	Bypass valve open, unfiltered oil passing to tank

Electrical Clogging Switch

The switch is used where an electrical signal is needed to indicate when the element needs changing. The switch can turn on a light, or shut the machine down, or any further function controlled by an electric signal. The switching pressure is 2,5 bar / 36.25 PSI and this allows the element to be changed before the bypass setting of 3 bar / 43.5 PSI is reached.

Maximum Voltage	Switch Type
42 V (normally open)	G42NO
42 V (normally closed)	G42NC
110 V (two-way contact)	G110
230 V (two-way contact)	G230



Dimensions in mm / in

Replacement Filter Elements RE Series

Product Description

STAUFF RE Replacement Filter Elements are manufactured in the common filter materials such as Stainless Fibre, Stainless Mesh, Cellulose and Inorganic Glass Fibre. As standard all Replacement Elements RE have tin plated steel parts for use with aggressive media such as water glycol, upon request you also can get other materials. All Replacement Elements made by STAUFF comply with quality specifications in accordance with international standards.

Order Code

RE - 250 G 10 B / X

1 2 3 4 5 6

1 Type

Filter Element Series **RE**

2 Group

According to filter housing

Note: See order code page C88.

3 Filter Material

Material	Max. Δp*collapse	Micron ratings available	Code
Inorg. glass fibre	25 bar / 363 PSI	3, 5, 10, 20	G
Stainless fibre	30 bar / 435 PSI		A
Filter paper	10 bar / 145 PSI	10, 20	N
Stainless mesh	30 bar / 435 PSI	25, 50, 100, 200	S

Note: *Collapse/burst resistance as per ISO 2941.
Other materials on request.

4 Micron Rating

3 µm	03
5 µm	05
10 µm	10
20 µm	20
25 µm	25
50 µm	50
100 µm	100
200 µm	200

Note: Other micron ratings on request.

5 Sealing Material

NBR (Buna®)	B
FPM (Viton®)	V
EPDM	E

Note: Other sealing materials on request.

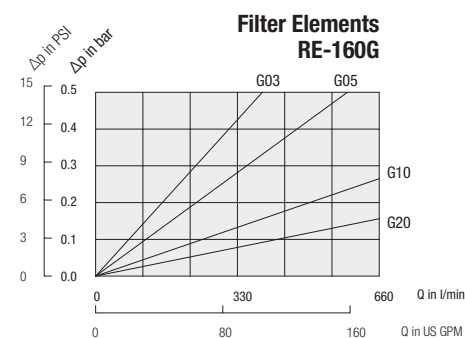
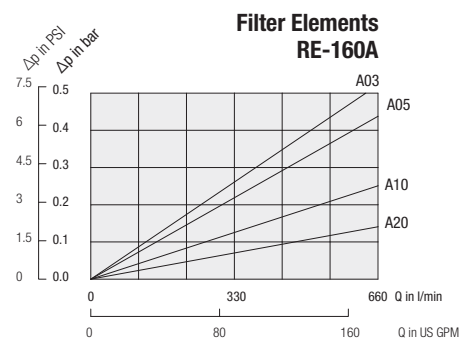
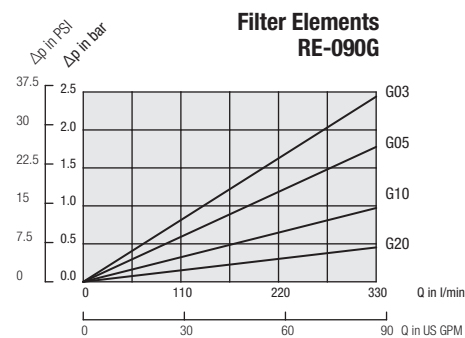
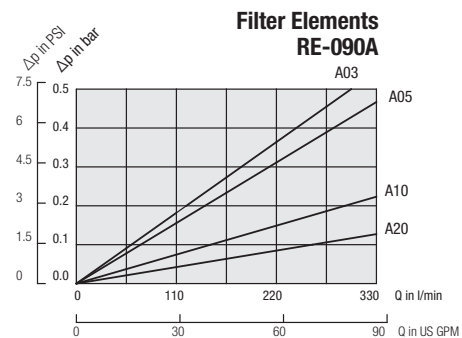
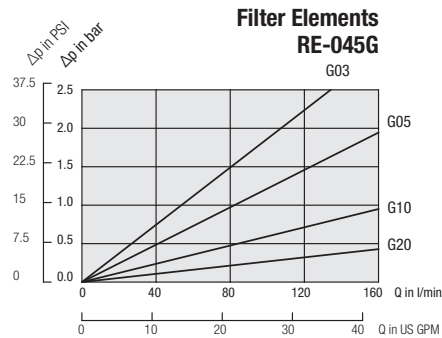
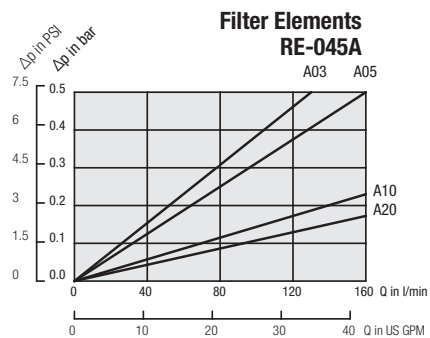
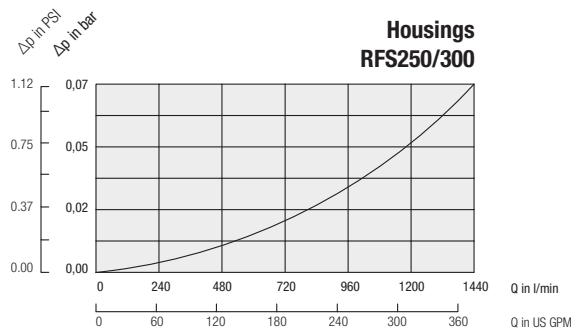
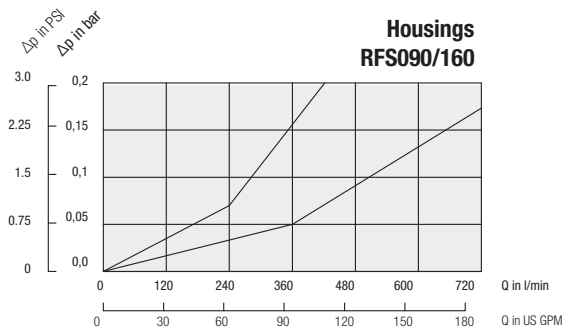
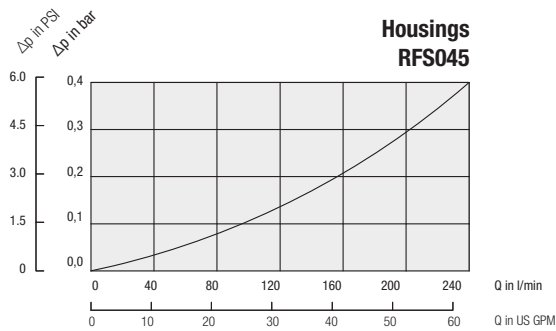
6 Design Code

Only for information **X**



Return Line Filters ■ Type RFS Flow Characteristics

The following characteristics are valid for mineral oils with a density of 0,85 kg/dm³ and the kinematic viscosity of 30 mm²/s (30cSt). The characteristics have been determined in accordance to ISO 3968. Multipass filter ratings have been obtained in accordance to ISO 16889. The housing pressure drop is directly proportional to the oil density. Consult STAUFF for details.



Return Line Filters ■ Type RFS Flow Characteristics

The following characteristics are valid for mineral oils with a density of 0,85 kg/dm³ and the kinematic viscosity of 30 mm²/s (30cSt). The characteristics have been determined in accordance to ISO 3968. Multipass filter ratings have been obtained in accordance to ISO 16889. The housing pressure drop is directly proportional to the oil density. Consult STAUFF for details.

