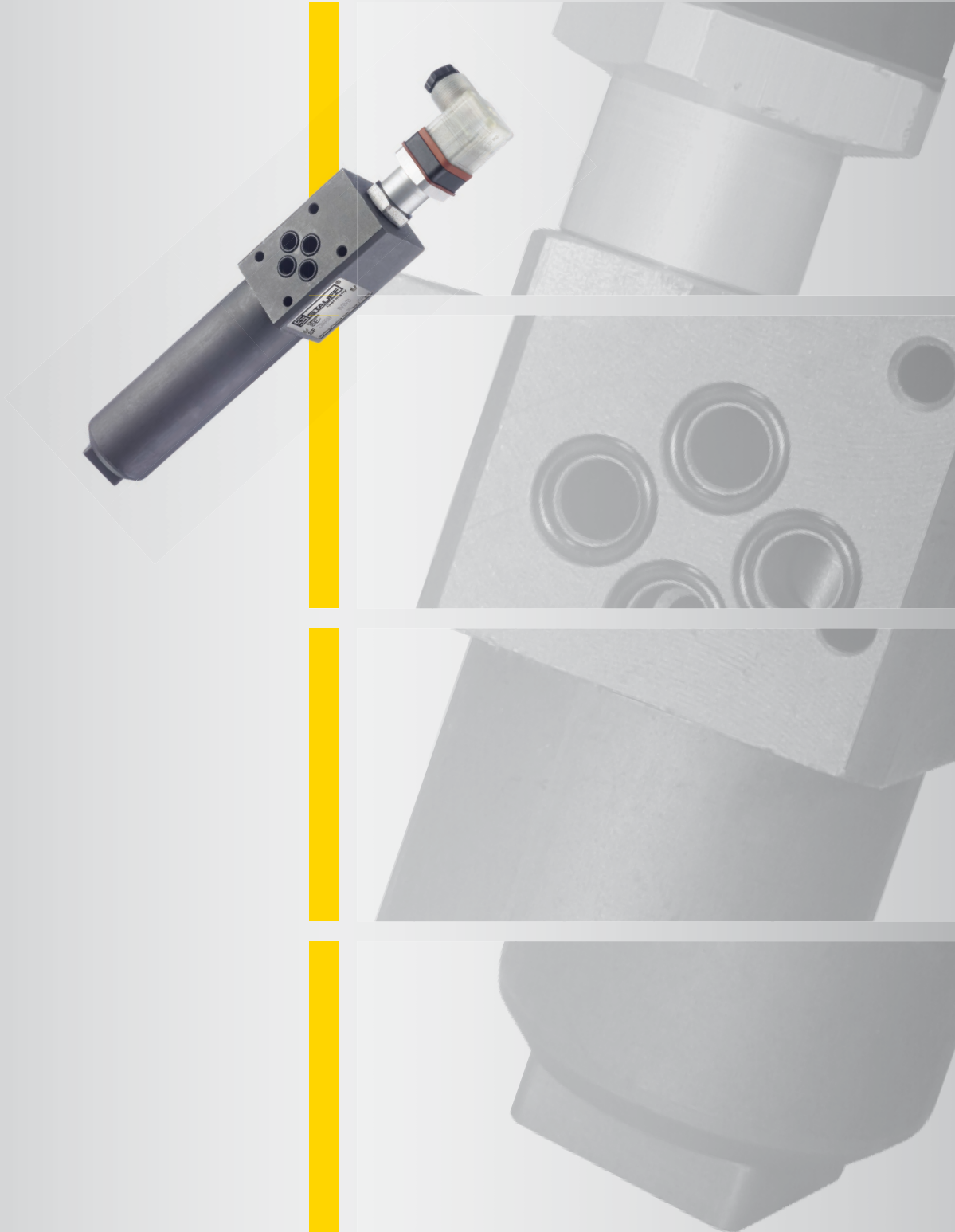




Local Solutions For Individual Customers Worldwide



High Pressure Filters SFZ for Sandwich Plate Mounting

Product Catalogue



STAUFF Filtration Technology offers a complete range of filtration products and services. This will provide the system designer or user with the highest level of contamination control demanded by today's most sophisticated applications.

STAUFF Filtration Technology Products include Pressure Filters, Return Line Filters, Replacement Filter Elements, Spin-On Filters, Suction Strainers and Filler Breathers for various hydraulic, lubrication and fuel oils.

STAUFF has the technical expertise to provide superior filter element designs for the STAUFF original filter housings and also for the interchange element market.

STAUFF manufactures more than 10.000 different elements. Many of these are designed to fit into filter housings produced by other companies while maintaining or surpassing the original performance.

A well-stocked warehouse guarantees the possibility of short-term arrangements without their own storage. Therefore, we can react flexible for your specific needs.

The "STAUFF Contamination Control Program" comprised the diagnostic services including fluid sampling and laser particle counting products for monitoring the system contamination level. In addition STAUFF offers a range of software solutions for element interchange and filter calculation. All products are subject to the audits in reference to international standards. This ensures a consistently high standard of quality.

Please do not hesitate to contact STAUFF for further details.

www.stauff.com
www.filterinterchange.com



Content

Product Description / Technical Data 3
 Dimensions 4

Order Codes
 High Pressure Filter Housings / Complete Filters 6
 Filter Elements SE 6

Clogging Indicators
 Product Description / Technical Data / Order Code 7

High Pressure Filters ■ Type SFZ



Product Description

STAUFF SFZ series High Pressure Filters are designed for sandwich plate mounting in manifold block mounting hydraulic applications, with a maximum operating pressure of 315 bar / 4560 PSI. Used together with STAUFF SE series Filter Elements, a high efficiency of contaminant removal is assured. The high dirt-hold capacity of the elements ensures long service life and, as a result, reduced maintenance costs.

Technical Data

Construction

- Designed for sandwich plate mounting

Materials

- Filter head: Free Cutting Steel
- Filter bowl: Cold Drawn Steel
- O-rings: NBR (Buna-N®)
FPM (Viton®)
EPDM (Ethylene-Propylene-Diene-Monomer-Rubber)
- Support ring (bowl): PTFE (Polytetrafluoroethylene)

Connecting Port

- ISO 4401 NG6 / DIN 24340-A6 / Cetop R 35 H

Operating Pressure

- Max. 315 bar / 4560 PSI

Burst Pressure

- Min. 945 bar / 13705 PSI

Temperature Range

- -10 °C ... +100 °C / +14 °F ... +212 °F

Media Compatibility

- Mineral oils, other fluids on request

O-Ring

- 9x1,7 (4 pieces included in delivery)

Options and Accessories

Filter Elements

STAUFF SE series Replacement Filter Elements for SFZ series filter housings are manufactured in the common filter materials such as Stainless Fibre, Stainless Mesh and Inorganic Glass Fibre.

As standard, all Replacement Elements SE series for SFZ, have tin-plated steel parts for use with aggressive media such as water glycol, other materials available on request.

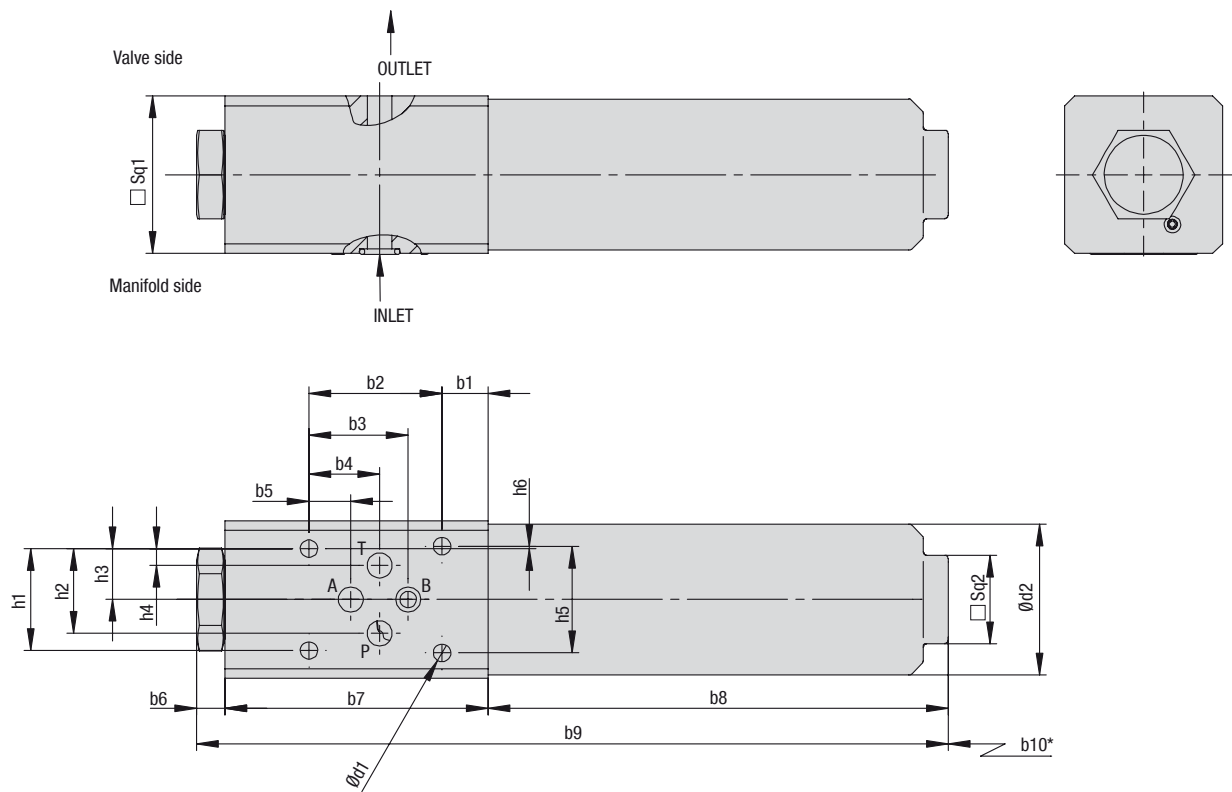
All STAUFF Replacement Elements comply with quality specifications in accordance with international standards.

Clogging Indicator (see page 7)

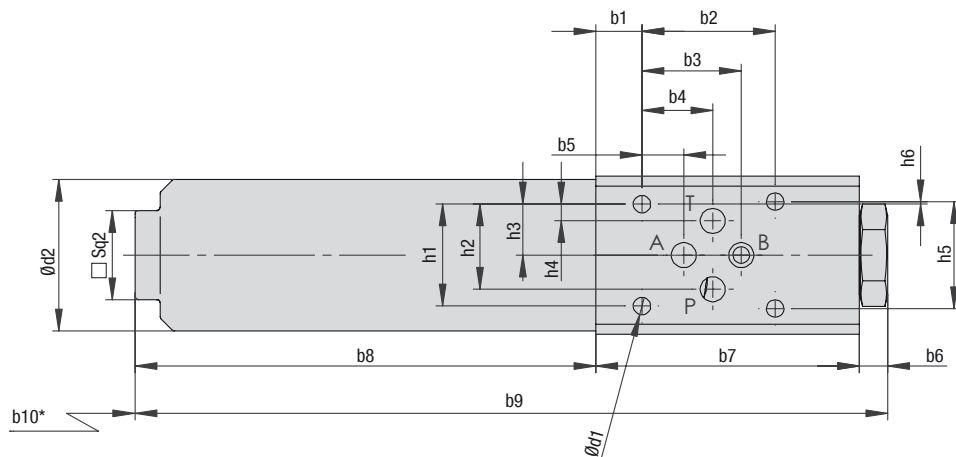
- Standard actuating pressure: 5_{-0,5} bar / 72.5_{-7.25} PSI Δp
8_{-0,5} bar / 116_{-7.25} PSI Δp
Other actuating pressure settings are available upon request.
- Available indicators: Visual
Electrical
Visual-electrical (24 V DC, 110 V AC, 230 V AC versions)

High Pressure Filter ■ Type SFZ

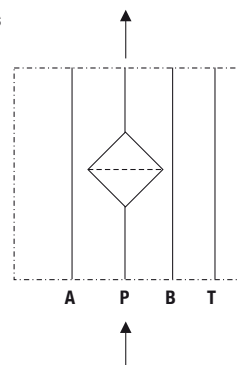
Version - right



Version - left



Symbol for hydraulic systems
SFZ008



* recommended space for element change

High Pressure Filter ■ Type SFZ

Dimensions (mm/in)	Filter Size SFZ
	SFZ008
b1	14
	.55
b2	40,5
	1.59
b3	30,2
	1.19
b4	21,5
	.85
b5	12,7
	.50
b6	9
	.35
b7	80
	3.15
b8	140
	5.51
b9	229
	9.02
b10	50
	1.97
d1	5,3
	.21
d2	46
	1.81
h1	31
	1.22
h2	25,9
	1.02
h3	15,5
	.61
h4	5,1
	.20
h5	32,5
	1.28
h6	0,75
	.03
Sq1	48
	1.89
Sq2	27
	1.06

High Pressure Filter Housings / Complete Filters ■ Type SFZ

SFZ **008** **...** **...** **B** / **B** / **P** **T** **230** - **5,0** / **R** / **X**

1 2 3 4 5 6 7 8 9 10 11 12

1 Type

High Pressure Filter for sandwich plate mounting **SFZ**

2 Group

Flow **Size**
30 l/min / 8 US GPM **008**
Note: Exact flow will depend on filter element selected and fluid viscosity.

3 Filter Material

Please note that the filter element is not protected by an internal bypass. Please be sure that the hydraulic systems is designed with the sufficient means to protect the element.

Material	max. Δp*collapse	Micron ratings available	Code
Without filter element	-	-	...
Inorg. glass fibre	25 bar / 363 PSI	3, 5, 10, 20	G
Inorg. glass fibre	210 bar / 3045 PSI		H
Stainless fibre	210 bar / 3045 PSI		M
Stainless mesh	30 bar / 435 PSI	25, 50, 100, 200	S

Note: * Collapse/burst resistance as per ISO 2941.
Bold types identify preferred materials, other materials on request.

4 Micron Rating

3 µm	03
5 µm	05
10 µm	10
20 µm	20
25 µm	25
50 µm	50
100 µm	100
200 µm	200

Note: Other micron ratings on request.

5 Sealing Material

NBR (Buna-N®)	B
FPM (Viton®)	V
EPDM	E

Note: Other sealing materials on request.

6 Connection Size

Group	Connection Size	Code
008	NG6* (Ref.: D03)	B

* ISO 4401 NG6 / DIN 24340-A6 / Cetop R 35 H

7 Clogging Indicator

Without clogging indicator	0
Visual, with automatic reset	A
Visual, with manual reset	V
Electrical	E
Visual-electrical	P

8 Thermostop

Without thermostop	none
With thermostop	T

9 Voltage (only for Code P)

24 V DC	024
110 V AC	110
230 V AC	230

10 Actuating Pressure Clogging Indicator

5,0 bar / 72,5 PSI	5,0
8,0 bar / 116 PSI	8,0

11 Design

Version right	R
Version left	L

12 Design Code

Only for information	X
----------------------	----------

Filter Elements ■ Type SE

SE - **008** **G** **10** **B** / **X**

1 2 3 4 5 6

1 Type

Filter Element Series **SE**

2 Group

According to filter housing

3 Filter Material

Please note that the filter element is not protected by an internal bypass. Please be sure that the hydraulic systems is designed with the sufficient means to protect the element.

Material	max. Δp*collapse	Micron ratings available	Code
Inorg. glass fibre	25 bar / 363 PSI	3, 5, 10, 20	G
Inorg. glass fibre	210 bar / 3045 PSI		H
Stainless fibre	210 bar / 3045 PSI		M
Stainless mesh	30 bar / 435 PSI	25, 50, 100, 200	S

* Collapse/burst resistance as per ISO 2941.
Bold types identify preferred materials, other materials on request.

4 Micron Rating

3 µm	03
5 µm	05
10 µm	10
20 µm	20
25 µm	25
50 µm	50
100 µm	100
200 µm	200

Note: Other micron ratings on request.

5 Sealing Material

NBR (Buna-N®)	B
FPM (Viton®)	V
EPDM	E

Note: Other sealing materials on request.

6 Design Code

Only for information	X
----------------------	----------

Clogging Indicators - Type HI

Product Description

STAUFF Pressure Filters have a wide range of clogging indicators available. If no indicator is specified, the port is sealed by a plug (HI-0). The clogging indicators are actuated by the differential pressure (Δp) across the element. The special piston design minimizes the effects of peak pressures in the system. An optional thermal lockout (thermo-stop) is available to prevent false indication under cold start conditions. Fluid temperature have to be at least $+20\text{ }^{\circ}\text{C}$ / $+68\text{ }^{\circ}\text{F}$ for the indicator to function. Special indicators with a temperature range down to $-45\text{ }^{\circ}\text{C}$ / $-49\text{ }^{\circ}\text{F}$ are available upon request.

Technical Data

Materials

- Body: Stainless Steel
- Sealings: NBR (Buna-N®)
FPM (Viton®)
EPDM (Ethylene-Propylene-Diene-Monomer-Rubber)

Thread

- G 1/2

Differential Pressure

- 5_{-0,5} bar / 72.5_{-7,25} PSI
- 8_{-0,5} bar / 72.5_{-7,25} PSI
- Other settings on request

Electrical

- Plug according to DIN-EN 175301-803 A (DIN 43650-A). Screwed cable gland PG11, protection rating (DIN 40050) IP65, both NO and NC contacts are available in the switch, rated capacity: see chart below

The visual clogging indicators are available in the following configurations:

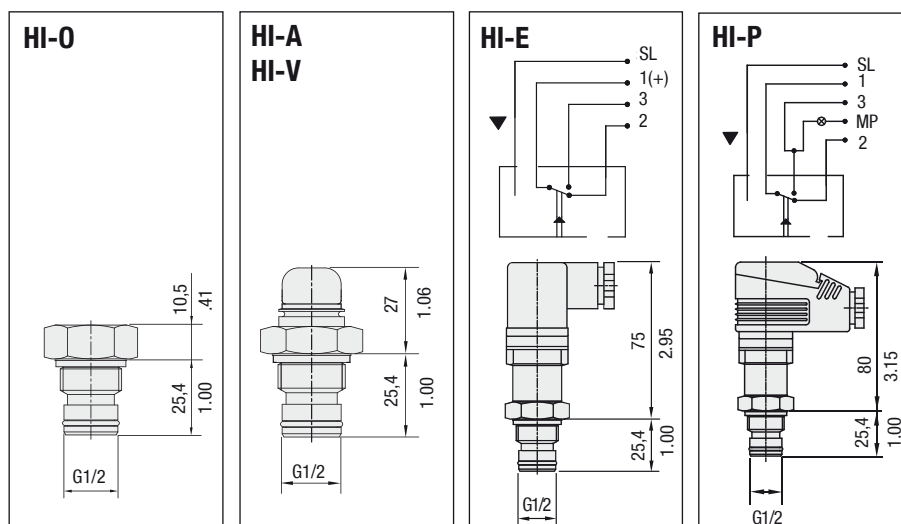
- Manual reset:** The indicator continues to display the clogged signal even through the Δp may have fallen. Pressing the plastic cover down will reset the indicator.
- Automatic reset:** The clogged signal will disappear when the Δp drops below the setting for the indicator.

Electrical and visual-electrical clogging indicators are only available with automatic reset.

Order Code

<div> <div>HI</div> <div>-</div> <div>P</div> <div>T</div> <div>230</div> <div>B</div> <div>2,5B</div> <div>/</div> <div>X</div> </div>						
1	2	3	4	5	6	7
1 Type Clogging Indicator for Pressure Filters HI	2 Indicator Type Plug 0 Visual, automatic reset A Visual, manual reset V Electrical E Visual-electrical P	3 Thermostop Without thermostop none With thermostop T	4 Voltage (only for Code P) 24 V DC 24 110 V AC 110 230 V AC 230	5 Sealing Material NBR (Buna-N®) B FPM (Viton®) V EPDM E	6 Differential Pressure Setting 5,0 bar / 72.5 PSI 5,0B 8,0 bar / 116 PSI 8,0B	7 Design Code Only for information X

Dimensions



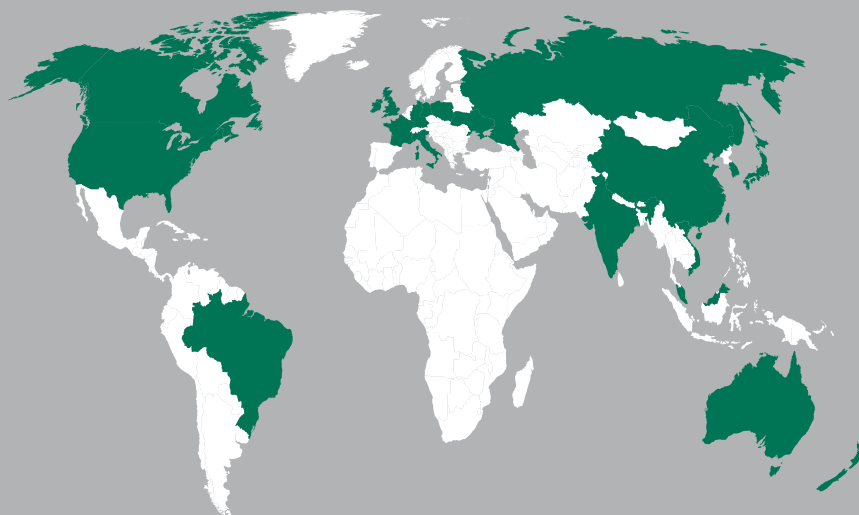
Rated Capacity HI-E and HI-P

Voltage V	Resistive Load A	Inductive Load A
110 V AC	5A	3A
230 V AC	3A	2A
24 V DC	4A	3A

High voltage peaks occur when inductive loads are switched off. Protective circuitry should be employed to reduce contact burnout.



Local Solutions For Individual Customers Worldwide



GERMANY

Walter Stauffenberg GmbH & Co. KG
P. O. Box 1745 • 58777 Werdohl
Im Ehrenfeld 4 • 58791 Werdohl
Tel.: +49 23 92 916 0
Fax: +49 23 92 916 160
sales@stauff.com

Globally available through
wholly-owned branches and
distributors in all industrial
countries.



www.stauff.com

www.filterinterchange.com

AUSTRALIA

STAUFF Corporation Pty. Ltd.
Tel.: +61 2 4271 18 77
sales@stauff.com.au

BRAZIL

STAUFF Brasil Ltda.
Tel.: +55 11 47 72 72 00
stauff@stauffbrasil.com

CANADA

STAUFF Canada Ltd.
Tel.: +1 416 282 46 08
sales@stauffcanada.com

CHINA

STAUFF China
Tel.: +86 21 68 18 70 00
info@stauff.com.cn

FRANCE

STAUFF S.A.S.
Tel.: +33 2 54 50 55 50
direction@stauffsa.com

INDIA

STAUFF India Pvt. Ltd.
Tel.: +91 20 66 20 2471
sales@stauffindia.com

IRELAND

STAUFF Ireland
Tel.: +44 28 92 60 69 00
sales@stauffireland.com

ITALY

STAUFF Italia s.r.l.
Tel.: +39 0362 63 80 70
sales@stauff.it

KOREA

STAUFF Korea Ltd.
Tel.: +82 51 266 66 66
info@stauff.co.kr

MALAYSIA

STAUFF South East Asia Sdn Bhd
Tel.: +60 3 8024 61 68
sales@stauff.com.my

NEW ZEALAND

STAUFF Corporation (NZ) Ltd.
Tel.: +64 9 271 48 12
info@stauff.co.nz

POLAND

STAUFF Polska Sp. z o.o.
Tel.: +48 58 660 11 60
sales@stauff.pl

RUSSIAN FEDERATION

STAUFF LLC
Tel.: +7 495 276 16 50
sales@stauff.ru

UNITED KINGDOM

STAUFF UK Ltd.
Tel.: +44 114 251 85 18
sales@stauff.co.uk

UNITED STATES

STAUFF Corporation
Tel.: +1 201 444 78 00
sales@stauffusa.com

VIETNAM

STAUFF Vietnam Ltd.
Tel.: +84 8 3995 47 23
sales@stauff.com.vn