



Local Solutions For Individual Customers Worldwide



Return Line Filters SRFL-SW
Industrial Filters for Water Cycles
Product Catalogue



STAUFF Filtration Technology offers a complete range of filtration products and services. This will provide the system designer or user with the highest level of contamination control demanded by today's most sophisticated applications.

STAUFF Filtration Technology Products include Pressure Filters, Return Line Filters, Replacement Filter Elements, Spin-On Filters, Suction Strainers and Filler Breathers for various hydraulic, lubrication and fuel oils.

STAUFF has the technical expertise to provide superior filter element designs for the STAUFF original filter housings and also for the interchange element market.

STAUFF manufactures more than 10000 different elements. Many of these are designed to fit into filter housings produced by other companies while maintaining or surpassing the original performance.

A well-stocked warehouse guarantees the possibility of short-term arrangements without their own storage. Therefore, we can react flexible for your specific needs.

The "STAUFF Contamination Control Program" comprised the diagnostic services including fluid sampling and laser particle counting products for monitoring the system contamination level. In addition STAUFF offers a range of software solutions for element interchange and filter calculation. All products are subject to the audits in reference to international standards. This ensures a consistently high standard of quality.

Please do not hesitate to contact STAUFF for further details.

www.stauff.com
www.filterinterchange.com



Index

Product Description / Technical Data

3

Dimensions

SRFL-SW-160/ -300/ -600 (Version with handle)

4

SRFL-SW-850/ -1000/ -1250 (Version with lifting device)

5

Order Code

Return Line Filter Housings / Complete Filters SRFL-SW

6

Replacement Filter Elements REL

7

Clogging Indicator

7

Return Line Filters ■ Type SRFL-SW



Product Description

STAUFF Return Line Filters SRFL-SW are specially developed for direct installation into the pipelines of industrial water cycles. Depending on their size, SRFL-SW filter housings are suitable for nominal flow rates up to 13330 l/min / 3300 US GPM at a maximum operating pressure of 16 bar / 232 PSI. The SRFL-SW have been designed to be used in the steel industry for pre-filtering or coarse filtering in descaling plants. For use with demineralised water we recommend the Return Line Filters SRFL-SW in Stainless Steel. The filter element construction as a Stainless Steel basket screen filter ensures a long service life.

Technical Data

Construction

- Designed for direct installation into pipelines
- Simplex version

Materials

- Filter housing: Carbon Steel, Stainless Steel on request
- Sealing: PTFE / NBR (Buna-N®)
PTFE / FKM (Viton®)

Port Connection

- ANSI or DIN flange

Operating Pressure

- Max. 16 bar / 232 PSI

Flow Rating

- Max. 13330 l/min / 3521 US GPM

Temperature Range

- -10 °C ... +100 °C / +14 °F ... +212 °F

Media Compatibility

- Water
- Coolant
- Others on request

Options and Accessories

Filter Elements

Stainless Steel basket screen filters from STAUFF's REL product line are used as filter elements, which are designed for flow from the inside to the outside. The filter elements are available in micron ratings between 50 µm and 200 µm. Solid particles collected in the basket are prevented from reaching the clean side of the water cycle when being replaced.

Clogging Indicator

- Differential Pressure Gauge

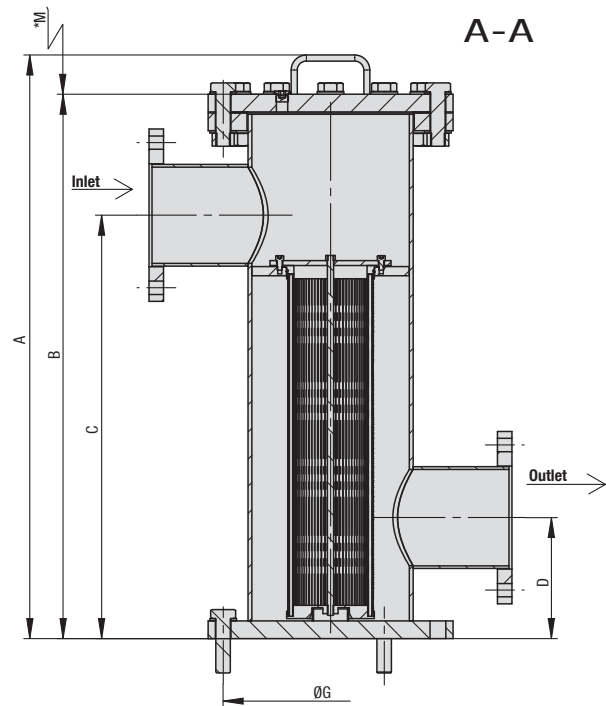
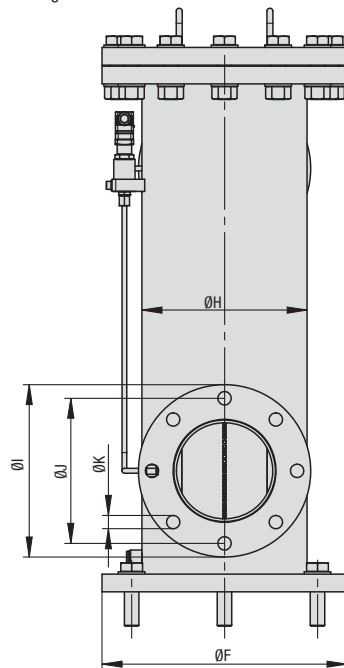
Drain Valve

- Available as an option: Integrated into the filter housing

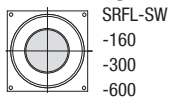
Return Line Filters ■ Type SRFL-SW-160 /-300 / -600

Version with handle

* recommended space for element change

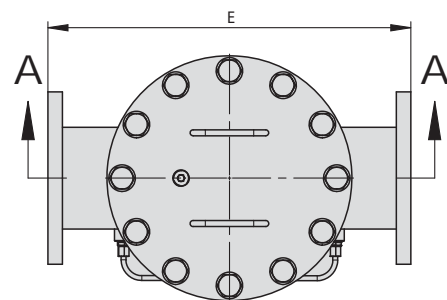


Detail arrangement of filter elements



SRFL-SW
-160
-300
-600

Flange Connection	Filter Size SRFL-SW		
	160	300	600
DIN	DN80	DN100	DN150
	DN50	DN125	-
ANSI	2	4	6
	3	5	-

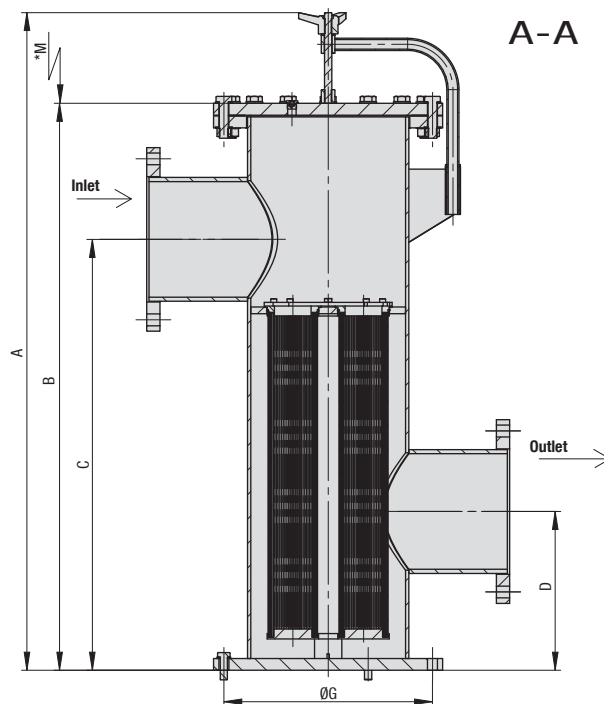
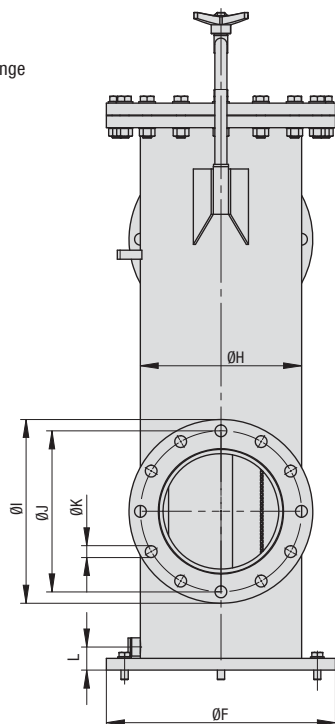


Dimensions (mm/in)		Filter Size SRFL-SW		
		160	300	600
A		840	965	965
		33.07	38.00	38.00
B		775	900	900
		30.51	35.43	35.43
C		600	700	700
		23.62	27.56	27.56
D		250	200	200
		9.84	7.87	7.87
E		440	500	600
		17.32	19.69	23.62
ØF		340	340	405
		13.39	13.39	15.94
ØG		295	295	355
		11.61	11.61	13.98
ØH		219,1	219,1	273
		8.63	8.63	10.75
ØI		200	220	285
		7.87	8.66	11.22
ØJ		160	180	240
		6.30	7.09	9.45
ØK		18	18	22
		.71	.71	.87
M		400	650	650
		15.75	25.60	25.60
Water Capacity (l/ US gal)		26,18	31,30	52,90
		6.92	8.27	14.00
Filter Elements	Designation	REL-100	REL-100	REL-150
	Quantity	1	1	1

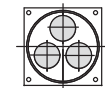
Return Line Filters ■ Type SRFL-SW-850 / -1000 / -1250

Version with lifting device

* recommended space for element change



Detail arrangement for filter elements

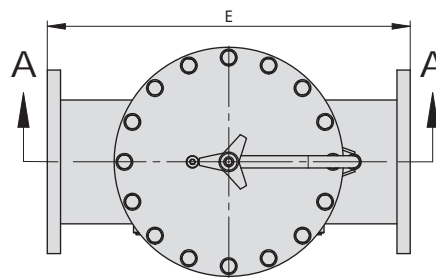


SRFL-SW-850

SRFL-SW-1000

SRFL-SW-1250

Flange Connection	Filter Size SRFL-SW		
	850	1000	1250
DIN	DN200	DN250	DN300
	DN150	-	-
ANSI	8	10	12
	-	-	-



Dimensions (mm/in)		Filter Size SRFL-SW			
		850		1000	
Filter Housing Material		CS	SS	CS	SS
A		1154	1150	1442	1450
		45.43	45.28	56.77	57.09
B		962	950	1250	1250
		37.87	37.40	49.21	49.21
C		750	750	950	950
		29.53	29.53	37.40	37.40
D		300	300	350	350
		11.81	11.81	13.78	13.78
E		700	700	800	800
		27.56	27.56	31.50	31.50
ØF		520	505	520	505
		20.47	19.88	20.47	19.88
ØG		470	460	470	460
		18.50	18.11	18.50	18.11
ØH		355,6	355,6	355,6	355,6
		14.00	14.00	14.00	14.00
ØI		340	340	405	405
		13.39	13.39	15.94	15.94
ØJ		295	295	355	355
		11.61	11.61	13.98	13.98
ØK		22	22	26	26
		.87	.87	1.02	1.02
M		650	650	850	850
		25.59	25.59	33.46	33.46
L		55	51	55	51
		2.17	2.01	2.17	2.01
Water Capacity (l/ US gal)		96,50	96,50	138,55	138,55
		25.49	25.49	36.60	36.60
Filter Elements	Designation	REL-150	REL-150	REL-250	REL-250
	Quantity	2	2	3	3

Return Line Filter Housing / Complete Filters ■ Type SRFL-SW

SRFL-SW - 300 B 200 B / A / 0 / CS / 0 / B / X

1

2

3

4

5

6

7

8

9

10

11

1 Type

Return Line Filter Simplex Water **SRFL-SW**

2 Group

Flow	Size
650 l/min / 160 US GPM	160
1200 l/min / 300 US GPM	300
2500 l/min / 600 US GPM	600
6000 l/min / 1500 US GPM	850
8300 l/min / 2000 US GPM	1000
13330 l/min / 3300 US GPM	1250

3 Filter Material

Material	Micron Ratings Available	Code
Without filter element	-	...
Stainless mesh	50, 80, 100, 125, 200	B

4 Micron Rating

50 µm	50
80 µm	80
100 µm	100
125 µm	125
200 µm	200

Note: Other micron ratings on request.

5 Sealing Material

PTFE / NBR (Buna®)	B
PTFE / FKM (Viton®)	V

Note: Other sealing materials on request.

6 Connection Style

Connection Style	Group						Code
	160	300	600	850	1000	1250	
DIN flange	DN80	DN100	DN150	DN200	DN250	DN300	A
	DN50	DN125	-	DN150	-	-	A1
ANSI flange	2"	4"	6"	8"	10"	12"	B
	3"	5"	-	-	-	-	B1

7 Connection Location

Opposite side	0
---------------	----------

8 Housing Material

Carbon Steel	CS
Stainless Steel	SS

9 Clogging Indicator

Without Clogging Indicator	0
Differential Pressure Gauge	M

Note: Other clogging indicators on request.

10 Drain Valve

Closed	0
Ball Valve	B

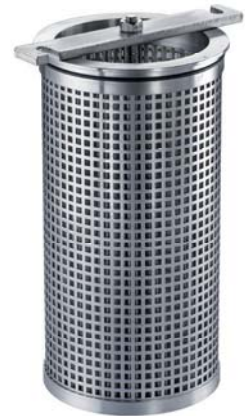
11 Design Code

Only for information	X
----------------------	----------

Replacement Filter Elements ■ Type REL

Product Description

Stainless Steel basket screen filters from STAUFF's REL product line are used as filter elements, which are designed for flow from the inside to the outside. Micron ratings ranging from 50 µm to 200 µm are available. Solid particles collected in the basket are prevented from reaching the clean side of the water cycle when being replaced. The filter element construction as a Stainless Steel basket screen filter ensures a long service life.



Order Code

REL - 150 B 200 B / X

1 2 3 4 5 6

1 Type

Filter Element Series **REL**

2 Group

Designation	Number of Filter Elements	Size
REL-100	1	160
REL-150	1	300
REL-150	1	600
REL-150	2	850
REL-250	3	1000
REL-250	5	1250

3 Filter Material

Material	Max. Δp*Collapse	Micron Ratings Available	Code
Stainless mesh	10 bar / 145 PSI	50, 80, 100, 125, 200	B

4 Micron Rating

50 µm	50
80 µm	80
100 µm	100
125 µm	125
200 µm	200

5 Sealing Material

NBR (Buna®) **B**
FPM (Viton®) **V**

6 Design Code

Only for information **X**

Clogging Indicator ■ Differential Pressure Gauge

Product Description

A visual clogging indicator, the function of which is based on the differential pressure between the contaminated and clean side of the filter elements, is available as an option, and enable a convenient determination of the condition of the basket filter.

Nominal Size

- 80

Range of Scale

- 0 ... 1 bar / 0 ... 14.5 PSI

Permissible Temperatures

- Ambient: 0 ... +60 °C / 0 ... +140 °F
- Media: +100 °C / +212 °F

Protection Rating

- IP 54 protection rating: Dust protected and protected against splashing water

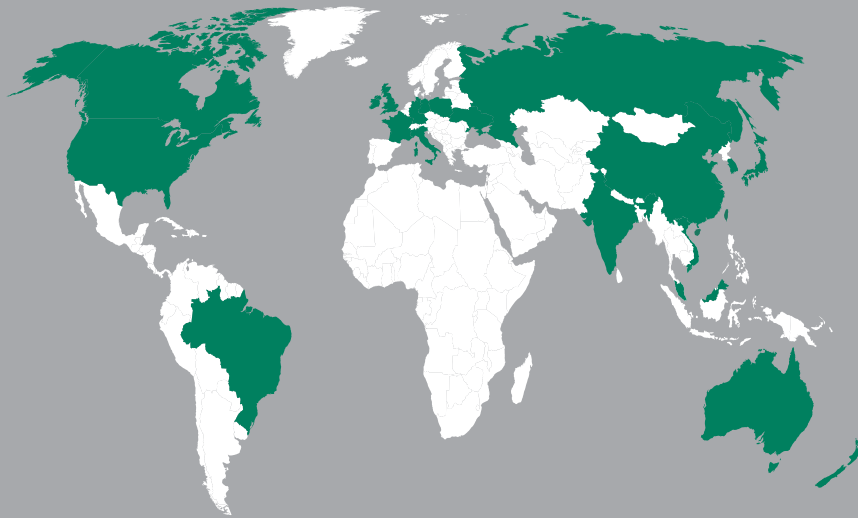
Material

- Housing: Die-cast Aluminum, black
- Sight glass: Acrylic
- Indicator: Aluminum, black





Local Solutions For Individual Customers Worldwide



GERMANY

Walter Stauffenberg GmbH & Co. KG
P. O. Box 1745 • 58777 Werdohl
Im Ehrenfeld 4 • 58791 Werdohl
Tel.: +49 23 92 916 0
Fax: +49 23 92 916 160
sales@stauff.com

Globally available through
wholly-owned branches and
distributors in all industrial
countries.



www.stauff.com
www.filtersuche.de

AUSTRALIA

STAUFF Corporation Pty. Ltd.
Tel.: +61 2 4271 18 77
sales@stauff.com.au

BRAZIL

STAUFF Brasil Ltda.
Tel.: +55 11 47 72 72 00
stauff@stauffbrasil.com

CANADA

STAUFF Canada Ltd.
Tel.: +1 416 282 46 08
sales@stauffcanada.com

CHINA

STAUFF China
Tel.: +86 21 68 18 70 00
info@stauff.com.cn

FRANCE

STAUFF S.A.S.
Tel.: +33 2 54 50 55 50
direction@stauffsa.com

INDIA

STAUFF India Pvt. Ltd.
Tel.: +91 20 66 20 2471
sales@stauffindia.com

IRELAND

STAUFF Ireland
Tel.: +44 28 92 60 69 00
sales@stauffireland.com

ITALY

STAUFF Italia s.r.l.
Tel.: +39 0362 63 80 70
sales@stauff.it

KOREA

STAUFF Korea Ltd.
Tel.: +82 51 266 66 66
info@stauff.co.kr

MALAYSIA

STAUFF South East Asia Sdn Bhd
Tel.: +60 3 8024 61 68
sales@stauff.com.my

NEW ZEALAND

STAUFF Corporation (NZ) Ltd.
Tel.: +64 9 271 48 12
info@stauff.co.nz

POLAND

STAUFF Polska Sp. z o.o.
Tel.: +48 58 660 11 60
sales@stauff.pl

RUSSIAN FEDERATION

STAUFF LLC
Tel.: +7 495 276 16 50
sales@stauff.ru

UNITED KINGDOM

STAUFF UK Ltd.
Tel.: +44 114 251 85 18
sales@stauff.co.uk

UNITED STATES

STAUFF Corporation
Tel.: +1 201 444 78 00
sales@stauffusa.com

VIETNAM

STAUFF Vietnam Ltd.
Tel.: +84 8 3995 47 23
sales@stauff.com.vn